



Meyer
CATTLE

PERFORMANCE
in the
PASTURE

FRIDAY, APRIL 5, 2024

6:30 PM | MEYER CATTLE SALE FACILITY | BOWLING GREEN, MISSOURI

of power
LOOK. POW

P E R F O R M A N C E I



Never Start

POWER. DATA.

N T H E P A S T U R E



Welcome Cattlemen!

We would like to welcome you to attend our annual Performance in the Pasture Spring Edition Production Sale. Our family is proud to offer you a set of cattle that we feel define Meyer Cattle.

We are proud to offer cattle that are “flexible”- no matter what your goals are - selling calves at weaning, retaining cattle through the feedlot, or retaining heifers, there are bulls here that can help you move your herd forward. We accomplish this by focusing on cattle with a balanced EPD profile yet are cattle that are good to look at.

Once again, we are offering a great selection of aged bulls on April 5. We believe this is hard to find. They have been aged slowly and carefully to ensure their longevity in your herd. All bulls have been genomic tested giving you the highest accuracy EPDs and confidence in your investments. Additionally, many of the bulls have qualified for “Targeting the Brand”. There’s more data than ever available on today’s sire prospects. As we try to balance numerous traits in sire selection, the Targeting the Brand logo helps us to identify bulls that will help us to achieve Certified Angus Beef qualifications.

As many of you know, we feed our own commercial cattle through the feedlot here in Bowling Green. These commercial cattle are all bred to Meyer Cattle bulls, and we are able to watch them perform all the way through harvest. Over 300 head of cattle were harvested this past year with 63% Prime and 37% Choice with no selects with an average yield grade of 3.5. Additionally, we retain our heifer calves thus allowing us to see and watch the mother cows they become. As you can see, we try to watch our cattle at all parts of their life and how they perform allowing us to make the best breeding decisions possible to produce cattle that we can be confident in. We are confident in the bulls and females that we are offering to you.

The females that we are offering are from the heart of the herd. As each female calved, I mentioned to Michele, “are we sure we want to sell her?”. They are good mothers that do their jobs and the calves at side are really good. These cattle are bred to make money and it looks like the calves at side will carry that statement through. Many of these are out of the EXAR West Point 0618B herd sire that has sired some incredible bulls in this offering that we are excited about.

We are excited about the cattle, and so are the people that help us get them to the sale. The team here at Meyer Cattle are just as passionate about the cattle as Michele, Lexi, Jax and I are. Gavin Deters, Anderson Hunt, Luke Cannon, and Levi Wommack truly help us make things happen on the farm. We are so grateful for them. Also, Mike and Tanner Ellison help us immensely get the cattle clipped and presented and continue to do a great job for us.

The cattle business is bright and looks to continue to be bright for a good while. Now is the time to invest in taking your operation forward as there has never been a better time to get a return on your investment than now. Join us Friday, April 5 at the farm for food, Angus fellowship, and good Angus cattle. We appreciate you and the relationships we have built. There is no better people than cattle people and we look forward to continuing our Angus relationships.

Sincerely,

THE BROCK MEYER FAMILY





CARING FOR YOUR BULLS

By Sally Anthonett

When you get your performance-tested bull(s) home, observing these management practices will result in the best reproductive performance.

FEEDING

Remember, the bull is a yearling or long yearling and still has some growing to do. Feed the young bull well. Hay and grain plus a protein supplement will be adequate. You should feed five to ten pounds of grain and one to two pounds of protein supplement in addition to full feed of good quality hay from now until the start of the season. Continue to feed liberally so the bull will grow out well.

BREEDING SEASON

Plan to use the new bull in a restricted 45-60 day breeding season the first time. Observe him closely to be sure he is servicing and settling females.

NUMBER OF COWS

The yearling bull should be used on a minimal number of cows or heifers. The number should be governed by his age at the start of the breeding season. The following is a guide:

MANAGEMENT + HOUSING

The bull should be kept in a well-fenced lot prior to and following the breeding season. A shed or other natural windbreak should be provided. Supply plenty of clean water and minerals free-choice. Treat routinely for lice and grub worms. Run bulls together with caution. Bulls of similar age which have bred cows together will usually work. Check for any unsoundness which might develop. Test annually for Brucellosis and Leptospirosis. Vaccinate for IBR, PI3, BVD and Lepto.

BULL'S AGE	# OF FEMALES
12 to 15 Months	10 to 12
15 to 18 Months	12 to 18
18 to 24 Months	18 to 25
24 Months & Over	25 to 35

The MEYER CATTLE VACCINATION PROGRAM

VIRASHIELD 6 VL5+HB
(IBR, BVD, BRSV, PI3 AND VIBRIO/LEPTO)

DECTOMAX POUR ON

All bulls have passed their respective semen tests.
All 24 month bulls have been tested free of Trich.
All bulls have been tested for PI BVD and found free.
All animal health conducted at Meyer Cattle is with recommendations and consultation from:

DR. DAVID HUDSON

Canton Veterinary Clinic, 573-822-2855

PERFORMANCE *in the* PASTURE

FRIDAY, APRIL 5, 2024 | 6:30 PM CST | MEYER CATTLE COMPANY HEADQUARTERS | BOWLING GREEN, MISSOURI

LOCATION

14353 HWY 61 EAST OUTER ROAD

BOWLING GREEN, MISSOURI 63334

The facility is located North of Bowling Green on HWY 61.

Take the east outer road North for 3/4 of a mile.

The facility will be on the right.

SALE DAY PHONES

Brock Meyer.....573-808-0624

Michele Meyer.....573-694-1622

Lexi Koelling.....573-777-0327

Don Birk.....417-860-8595

Jordan Hunter.....417-224-6296

Gregg "Billybob" Zurliene.....618-599-2263

AUCTIONEER

Clint Hunter.....417-860-1624

SALE REPRESENTATIVES

John Sutton.....702-336-4713

Adam Conover, *American Angus Association*816-676-8560

Julie Conover, *Missouri Angus*.....734-260-8635

TERMS + CONDITIONS

Terms are check or cash, unless prior arrangements have been made before the sale. Cattle sell under the Terms and Conditions of the American Angus Association.

SUPPLEMENT SHEET

An updated sheet will be available on sale day and will supercede any information printed in this catalog.

BREEDING GUARANTEE

We believe all bulls to be fertile and have passed a breeding soundness exam 30 days prior to the sale. All bulls sell with a first breeding season guarantee. Breeding season is defined as 90 days after the first day the bull is exposed to cows. Bulls selling for \$3500 or more are guaranteed against breeding injury for the first season, defined at a 90 day period following the first turnout of the bull. The bull may be replaced with another bull if one is available. Or a credit may be given for the next sale less the salvage value of the injured bull. Please notify us as soon as the injury occurs and prior to the bull being sold. Replacement bulls are not covered by this guarantee. This policy does not cover neglect.

EXPRECTED PROGENY DIFFERENCES

EPDs listed in the catalog are current at the printing of this catalog. Bulls with the HD50K logo have been tested and have Genomic Enhanced EPDs for increased accuracy. For updates, visit www.angus.org.



LIABILITY

All persons attending the sale do so at their own risk. Meyer Cattle Company assumes no liability for accidents, theft or damages occurring at the sale facility. Additionally, all cattle are considered sold after the sale.

DELIVERY

Bulls and females are ready to be loaded upon purchase.

INSURANCE

Sheila Jensen.....785-262-1116

James Bessler.....815-762-2641

We encourage the purchase of livestock mortality insurance to protect your investment. Any bulls left under the care of Meyer Cattle Company should be insured under the new buyer. Meyer Cattle is not responsible for injury occurring after the sale of the cattle.

SIGHT UNSEEN POLICY

We will guarantee the complete satisfaction of all sale lots purchased sight unseen. All bids will be handled with the highest appropriateness and confidentiality.

VIDEO AUCTION SALE PROCEDURE

All animals selling will be penned at the sale facility. The auction will be conducted inside the barn at Meyer Cattle Company. A video of each sale animal will be played on large screen displays as the respective animal sells. Cattle will not come into the sale ring. Please arrive early to view the sale offering. The auction will be available for viewing and bidding online through cci.live.



new this year!

HEALTH

Cattle will have health papers for out of state purchases. All bulls will have a current breeding soundness exam and are semen tested.

COMPLIMENTARY MEAL

A beef dinner provided by Meyer Cattle will be available on sale day beginning at 5:00 PM CST.

ACCOMMODATIONS

Super 8.....573-324-6000

Located in Bowling Green, 3 miles from the sale facility.

CREDIT

Catalog Design and Photography by *Melissa Grimmel Schaake*
Scenic Photography by *Paige Wallace Arnold*

YEARLING



LOT 1

LOT 1

MEYER ICONIC 3060

DOB 01/31/23 • AAA 20889081 • TATTOO 3060



ANGUSGS
Powered by NECAV

ACT BW	72
ADJ WW	895
ADJ YW	1266

MUSGRAVE 316 STUNNER
SIRE: DB ICONIC G95
 DB MS DISCOVERY D13
 EXAR MONUMENTAL 6056B
DAM: MEYER MISS PRIDE 042
 MEYER MISS PRIDE 1430

LD CAPITALIST 316
 MCATL BLACKBIRD 831-1378
 V A R DISCOVERY 2240
 DB MS FINAL TOOL 4120
 3F EPIC 4631
 FWY 7008 OF C085 4029
 EXAR BRIGHT FUTURE 2087B
 EXAR MISS PRIDE 5867

	CED	BW	WW	YW	DMI	SC	CEM	MILK	MW
%RANK EPD	8	1.5	92	155	1.87	2.19	10	30	96
	35%	60%	2%	3%	95%	2%	35%	25%	20%
	MARB	RE	FAT	\$M	\$W	\$F	\$G	\$B	\$C
%RANK EPD	1.45	0.93	0.055	70	89	125	94	219	354
	4%	15%	95%	35%	1%	3%	4%	2%	1%

Big time numbered, big time bull. Built wide with a big foot, bone, belly, and butt. Super sound and can get out and go. His EPD package is impressive - Top 2% of the breed for weaning, Top 3% for yearling, Top 4% for Marbling. But don't stop there - his dollar values are where its at - Top 4% for \$G, Top 3% for \$F, Top 2% for \$B, and Top 1% for \$W and \$C.



DB ICONIC G95
 SIRE OF LOTS 1, 3, 5, 8, 9, 12, 20 & 37



LOT 2

LOT 2

MEYER WEST POINT 3003

DOB 01/05/23 • AAA 20889239 • TATTOO 3003



ANGUSGS
Powered by NECAV

E W A WEST POINT 7258
SIRE: **EXAR WEST POINT 0618**
HR ERIANNA 7575

STEVENSON BIG LEAGUE 70749
DAM: **MEYER BLACKCAP 053**
EXAR BLACKCAP 5071

G A R MOMENTUM
E W A 3114 OF 128 WEIGH UP
BASIN PAYWEIGHT 1682
WELYTOK TOTAL 10 ERIANNA 3B2
JINDRA ACCLAIM
RL 9061 BIRDIE 3102
EXAR EZX 3772B
EXAR BLACKCAP 3777

ACT BW	60
ADJ WW	777
ADJ YW	1294

	CED	BW	WW	YW	DMI	SC	CEM	MILK	MW
%RANK EPD	12	-0.8	82	152	1.61	0.9	11	30	114
	10%	15%	10%	4%	85%	50%	25%	25%	10%
	MARB	RE	FAT	\$M	\$W	\$F	\$G	\$B	\$C
%RANK EPD	1.01	0.41	-0.009	36	72	129	70	199	294
	20%	85%	25%	95%	20%	2%	20%	5%	15%



EXAR WEST POINT 0618
SIRE OF LOTS 2, 4 & 6

Outcross bull that represents so much of what the Angus breed needs. Good footed, big, long, and stout with an incredible set of data. Michele thinks this bull does so much right, and I don't disagree. Heifer bull with incredible growth. He charts over a 1.0 Marbling with a solid set of dollar values.



LOT 3

LOT 3

MEYER ICONIC 3067

DOB 02/02/23 • AAA 20835689 • TATTOO 30677



ANGUS GS
Powered by NECAVY

ACT BW

70

ADJ WW

ADJ YW

1374

MUSGRAVE 316 STUNNER
SIRE: DB ICONIC G95
 DB MS DISCOVERY D13
 BASIN ENCORE 7173
DAM: BASIN CAMILLA H110
 BASIN CAMILLA D224

LD CAPITALIST 316
 MCA TL BLACKBIRD 831-1378
 V A R DISCOVERY 2240
 BASIN BONUS 4345
 EXAR LUCY 4060
 WR JOURNEY-1X74
 BASIN CAMILLA 1676

	CED	BW	WW	YW	DMI	SC	CEM	MILK	MW
%RANK EPD	7	0.7	79	136	1.59	1.16	4	31	94
	45%	40%	15%	15%	85%	35%	90%	20%	20%
	MARB	RE	FAT	\$M	\$W	\$F	\$G	\$B	\$C
%RANK EPD	1.39	0.73	0.054	62	78	95	89	183	299
	5%	40%	95%	55%	10%	35%	5%	15%	15%

This bull is a big time - "do it all" kind of bull. This is good cattle. Big topped, big ended, with a big round rib cage. He is matched with a solid set of data. He is the bull that will make a change in your calf crop immediately.

LOT 4

MEYER WEST POINT 3055

DOB 01/30/23 • AAA 20832080 • TATTOO 3055



ANGUS GS
Powered by NECAVY

ACT BW

68

ADJ WW

859

ADJ YW

1264

E W A WEST POINT 7258
SIRE: EXAR WEST POINT 0618
 HR ERIANNA 7575

DEER VALLEY GROWTH FUND
DAM: MEYER TROJAN ERICA 1026
 MEYER TROJAN ERICA 936

G A R MOMENTUM
 E W A 3114 OF 128 WEIGH UP
 BASIN PAYWEIGHT 1682
 WELYTOK TOTAL 10 ERIANNA 3B2
 BASIN PAYWEIGHT 1682
 DEER VALLEY RITA 36113
 EXAR MONUMENTAL 6056B
 MEYER TROJAN ERICA 1745

	CED	BW	WW	YW	DMI	SC	CEM	MILK	MW
%RANK EPD	8	2.2	90	160	1.93	2	10	33	82
	35%	75%	3%	2%	95%	3%	35%	15%	30%
	MARB	RE	FAT	\$M	\$W	\$F	\$G	\$B	\$C
%RANK EPD	1.23	0.7	0.021	75	86	122	83	204	340
	10%	45%	65%	25%	2%	4%	10%	4%	2%

Lot 4 could have very easily been Lot 1 - we love this bull. He is the real deal - muscle, body, shape with an incredible look. His data package is incredible. This is our first calf crop of the EXAR West Point 0618 bull and we are pretty jazzed up about his impact on our herd. A 1/4 brother sold to Musgrave Angus in the Spring 2023 sale and is doing great things for their herd!



LOT 4



1/4 BROTHER TO LOT 4
 PURCHASED BY
 MUSGRAVE ANGUS

LOT 5

MEYER ICONIC 3077

DOB 02/03/23 • AAA 20835727 • TATTOO 3077



ANGUS 6S
Powered by NEOGEN

ACT BW 75
ADJ WW 797
ADJ YW 1351

MUSGRAVE 316 STUNNER
SIRE: **DB ICONIC G95**
DB MS DISCOVERY D13

HA COWBOY UP 5405
DAM: **MEYER CAMILLA 859**
BASIN CAMILLA 4275

LD CAPITALIST 316
MCATL BLACKBIRD 831-1378
V A R DISCOVERY 2240
DB MS FINAL TOOL 4120
HA OUTSIDE 3008
HA BLACKCAP LADY 1602
EXAR DENVER 2002B
BASIN CAMILLA 2311

	CED	BW	WW	YW	DMI	SC	CEM	MILK	MW
%RANK EPD	0	3.4	87	160	2	1.32	2	30	119
	90%	90%	4%	2%	95%	25%	95%	25%	5%
	MARB	RE	FAT	\$M	\$W	\$F	\$G	\$B	\$C
%RANK EPD	1.09	0.72	0.014	45	72	121	76	197	301
	15%	40%	55%	95%	20%	4%	15%	10%	15%

Iconic son out of our great Cami 859 cow-- you can do it all with this bull-- go to the bank selling his progeny through the feedlot and on the rail or as selling bred replacement females. This bull will excite you like he does us. When you look at this set of bulls, he keeps making himself known. Point blank-- he is hard to miss.



LOT 5

LOT 6

MEYER WEST POINT 3101

DOB 02/08/23 • AAA 20832088 • TATTOO 3101



ANGUS 6S
Powered by NEOGEN

ACT BW 65
ADJ WW 919
ADJ YW 1404

E W A WEST POINT 7258
SIRE: **EXAR WEST POINT 0618**
HR ERIANNA 7575

EXAR INSTRUMENTAL 8522B
DAM: **MEYER ERICA 1065**
MEYER ERICA 1642

G A R MOMENTUM
E W A 3114 OF 128 WEIGH UP
BASIN PAYWEIGHT 1682
WELYTOK TOTAL 10 ERIANNA 3B2
EXAR MONUMENTAL 6056B
EXAR BLACKCAP 6389
EXAR DENVER 2002B
EXAR ERICA 9106

	CED	BW	WW	YW	DMI	SC	CEM	MILK	MW
%RANK EPD	12	-0.2	81	157	2.23	0.61	14	35	116
	10%	20%	10%	3%	95%	70%	10%	10%	10%
	MARB	RE	FAT	\$M	\$W	\$F	\$G	\$B	\$C
%RANK EPD	0.94	0.69	0.026	49	77	112	67	179	281
	25%	45%	70%	90%	10%	10%	25%	15%	25%

Another West Point son that we just love. Huge bodied, thick ended, and gets out and goes. He has been a favorite of many that have viewed the bulls. We will be excited to hear your thoughts.



LOT 6

LOT 7

MEYER GROWTH FUND 3036

DOB 01/27/23 • AAA 20835890 • TATTOO 3036



ANGUS 6S
Powered by NEOGEN

ACT BW 70
ADJ WW 820
ADJ YW 1310

BASIN PAYWEIGHT 1682
SIRE: **DEER VALLEY GROWTH FUND**
DEER VALLEY RITA 36113

EXAR 263C
DAM: **EXAR RITA 7623**
EXAR RITA 9214

BASIN PAYWEIGHT 006S
21AR O LASS 7017
PLATTEMERE WEIGH UP K360
DEER VALLEY RITA 9457
BON VIEW NEW DESIGN 1407
EXAR JUNE C 3577
RITO 6EM3 OF 4L1 EMBLAZON
EXAR RITA 2845

	CED	BW	WW	YW	DMI	SC	CEM	MILK	MW
%RANK EPD	7	2	89	156	1.04	0.55	9	24	107
	45%	70%	3%	3%	45%	75%	45%	70%	10%
	MARB	RE	FAT	\$M	\$W	\$F	\$G	\$B	\$C
%RANK EPD	0.69	0.89	-0.003	54	77	124	59	183	291
	50%	20%	30%	80%	10%	3%	35%	15%	20%

Long bodied, square hipped, and nice belly shape out of Growth Fund. Couple this with him being out of an incredible donor here at Meyer Cattle this kind of bull is what our program is all about.



LOT 7



LOT 8

LOT 8

MEYER LK ICONIC 3051

DOB 01/30/23 • AAA 20832079 • TATTOO 3051

MUSGRAVE 316 STUNNER
SIRE: DB ICONIC G95
 DB MS DISCOVERY D13
 TEX PLAYBOOK 5437
DAM: LK BLACKCAP 922
 EXAR BLACKCAP 2931

LD CAPITALIST 316
 MCATL BLACKBIRD 831-1378
 V A R DISCOVERY 2240
 DB MS FINAL TOOL 4120
 BASIN PAYWEIGHT 1682
 RITA 1C43 OF 9M26 COMPLETE
 CONNEALY CONSENSUS 7229
 SANDPOINT BLACKCAP 7756



ANGUS 6S
 Powered by NECCGEN
ACT BW
 70
ADJ WW
 889
ADJ YW
 1233

	CED	BW	WW	YW	DMI	SC	CEM	MILK	MW
%RANK EPD	9	-0.7	72	113	1.49	1.14	11	31	42
	30%	15%	25%	50%	75%	35%	25%	20%	80%
	MARB	RE	FAT	SM	SW	SF	SG	SB	SC
%RANK EPD	1.16	0.65	0.079	83	82	74	74	147	274
	15%	50%	95%	10%	3%	80%	15%	45%	30%

Incredible bull out of an incredible cow that is selling as Lot 54. The basics of this bull is what makes cattlemen money and keeps them in business. Mark him and find him in Bowling Green on April 5.



LOT 9

LOT 9

MEYER ICONIC 3039

DOB 01/27/23 • AAA 20835752 • TATTOO 3039

MUSGRAVE 316 STUNNER
SIRE: DB ICONIC G95
 DB MS DISCOVERY D13
 EXAR BRIGHT FUTURE 2087B
DAM: MEYER BARBARAMERE 1633
 EXAR BARBARAMERE 7775

LD CAPITALIST 316
 MCATL BLACKBIRD 831-1378
 V A R DISCOVERY 2240
 DB MS FINAL TOOL 4120
 EXAR UPSHOT 0562B
 BASIN LUCY 3829
 EXAR RIGHT TIME 5021
 RR BARBARAMERE 4168



ANGUS 6S
 Powered by NECCGEN
ACT BW
 78
ADJ WW
 802
ADJ YW
 1253

	CED	BW	WW	YW	DMI	SC	CEM	MILK	MW
%RANK EPD	7	1.9	84	152	1.88	0.29	12	24	111
	45%	65%	10%	4%	95%	85%	20%	70%	10%
	MARB	RE	FAT	SM	SW	SF	SG	SB	SC
%RANK EPD	1.21	0.49	0.011	53	70	107	80	187	296
	10%	75%	50%	80%	20%	15%	10%	10%	15%

Big time growth bull with a great Marbling EPD. Just like his numbers would suggest, he is loaded with muscle and product. This is a bull we would use on commercial cows without question.



LOT 10

LOT 10

MEYER TESTAMENT 3017

DOB 01/10/23 • AAA 20835744 • TATTOO 3017

TEHAMA PATRIARCH F028
SIRE: TEHAMA TESTAMENT
 TEHAMA MARY BLACKBIRD E789
 STEVENSON BIG LEAGUE 70749
DAM: MEYER CAMILLA 1080
 MEYER CAMILLA 812

S S NIAGARA Z29
 TEHAMA ELITE BLACKBIRD D826
 SITZ WISDOM 481T
 TEHAMA MARY BLACKBIRD Y677
 JINDRA ACCLAIM
 RL 9061 BIRDIE 3102
 HA COWBOY UP 5405
 BASIN CAMILLA 4275



ANGUS 6S
 Powered by NECCGEN
ACT BW
 70
ADJ WW

ADJ YW
 1266

	CED	BW	WW	YW	DMI	SC	CEM	MILK	MW
%RANK EPD	8	0.7	81	135	1.67	1.8	7	26	80
	35%	40%	10%	15%	85%	10%	65%	55%	35%
	MARB	RE	FAT	SM	SW	SF	SG	SB	SC
%RANK EPD	0.48	0.63	0.019	71	79	90	43	133	244
	70%	55%	60%	30%	10%	45%	70%	65%	60%

We really like our Tehama Testament calves and this bull is why - so much to this bull. He is complete and sound.



TEHAMA TESTAMENT
SIRE OF LOTS 10, 15, 16, 17 & 26



SITZ RESILIENT 10208
SIRE OF LOTS 11 & 28

LOT 11

MEYER RESILIENT 3082

DOB 02/05/23 • AAA 20835812 • TATTOO 3082



ANGUS 65
Powered by NRGGEN

ACT BW

70

ADJ WW

ADJ YW

1198

SITZ STELLAR 726D
SIRE: **SITZ RESILIENT 10208**
SITZ MISS BURGESS 1856

BASIN PAYCHECK 7013
DAM: **BASIN KIMBERLY H031**
BASIN KIMBERLY F239

MOHNEN SUBSTANTIAL 272
SITZ PRIDE 200B
SITZ TOP GAME 561X
SITZ MISS BURGESS 4381
BASIN PAYCHECK 5249
BASIN TROJAN ERICA 5290
BASIN MOMENTUM 3023
BASIN KIMBERLY X029

	CED	BW	WW	YW	DMI	SC	CEM	MILK	MW
%BANK EPD	6	0.1	79	140	1.06	0.02	9	28	106
	55%	25%	15%	15%	45%	95%	45%	40%	10%
	MARB	RE	FAT	\$M	\$W	\$F	\$G	\$B	\$C
%BANK EPD	0.81	0.33	0.031	57	74	83	55	138	236
	35%	90%	75%	70%	15%	60%	45%	60%	65%

Michele's pick of the sale-- he is so sound, so complete, with no holes. This will be an incredible mature bull that will be a game changer for the herd. Invest with confidence in this Sitz Resilient son.



LOT 11

LOT 12

MEYER ICONIC 3004

DOB 01/05/23 • AAA 20889172 • TATTOO 3004



ANGUS 65
Powered by NRGGEN

ACT BW

65

ADJ WW

765

ADJ YW

1231

MUSGRAVE 316 STUNNER
SIRE: **DB ICONIC G95**
DB MS DISCOVERY D13

EXAR MONUMENTAL 6056B
DAM: **MEYER LADY BLANCHE 9106**
EXAR LADY BLANCHE 4004

LD CAPITALIST 316
MCATL BLACKBIRD 831-1378
V A R DISCOVERY 2240
DB MS FINAL TOOL 4120
3F EPIC 4631
FWY 7008 OF C085 4029
EXAR GRIT 1025B
EXAR LADY BLANCHE 2067

	CED	BW	WW	YW	DMI	SC	CEM	MILK	MW
%BANK EPD	9	0.9	84	147	1.65	1.94	12	28	120
	30%	45%	10%	10%	85%	4%	20%	40%	5%
	MARB	RE	FAT	\$M	\$W	\$F	\$G	\$B	\$C
%BANK EPD	1.35	0.88	0.034	51	76	111	90	201	312
	10%	20%	80%	85%	10%	15%	5%	5%	10%

Iconic son that does what the Iconics do so well. They are stout and will add product. He is a heifer bull that will certainly inject muscle into those cattle.



DB ICONIC G95
SIRE OF LOTS 1, 3, 5, 8, 9, 12, 20 & 37

LOT 13

MEYER WEST POINT 3019

DOB 01/12/23 • AAA 20832075 • TATTOO 3019

E W A WEST POINT 7258
SIRE: **EXAR WEST POINT 0618**
HR ERIANNA 7575

C&C INTUITION 7104
DAM: **MEYER LK MISSIE 0121**
BIGRIVER PVF MISSIE 1103

G A R MOMENTUM
E W A 3114 OF 128 WEIGH UP
BASIN PAYWEIGHT 1682
WELYTOK TOTAL 10 ERIANNA 3B
PVF INSIGHT 0129
C&C WINNIE 2048
PVF ALL PAYDAY 729
PVF MISSIE 8018

ANGUS GS
Powered by NEAGEN
ACT BW 85
ADJ WW 867
ADJ YW 1261

	CED	BW	WW	YW	DMI	SC	CEM	MILK	MW
%RANK EPD	1	4.6	91	159	1.59	0.15	4	36	127
	90%	95%	2%	2%	85%	90%	90%	5%	3%
	MARB	RE	FAT	SM	SW	SF	SG	SB	SC
%RANK EPD	0.4	0.98	-0.057	39	76	123	50	173	263
	80%	10%	1%	95%	10%	4%	55%	20%	40%

We love this bull. Long spined, square hiped, out of the Missie cow family from PVF Angus, the Alan Miller Family. Hes fun to look at and his numbers read like a production bull should.

LOT 15

MEYER TESTAMENT 3022

DOB 01/13/23 • AAA 20835742 • TATTOO 3022

TEHAMA PATRIARCH F028
SIRE: **TEHAMA TESTAMENT**
TEHAMA MARY BLACKBIRD E789

BASIN ADVANCE 5016
DAM: **MEYER FOREVER LADY 1091**
EXAR FOREVER LADY 6591

S S NIAGARA Z29
TEHAMA ELITE BLACKBIRD D826
SITZ WISDOM 481T
TEHAMA MARY BLACKBIRD Y677
BASIN ADVANCE 3134
BASIN JOY 2006
EXAR DENVER 2002B
EXAR FOREVER LADY 6382

ANGUS GS
Powered by NEAGEN
ACT BW 80
ADJ WW 808
ADJ YW 1256

	CED	BW	WW	YW	DMI	SC	CEM	MILK	MW
%RANK EPD	-2	3.4	82	145	1.31	0.49	3	30	96
	95%	90%	10%	10%	65%	75%	95%	25%	20%
	MARB	RE	FAT	SM	SW	SF	SG	SB	SC
%RANK EPD	0.97	0.66	0.019	75	71	93	69	162	285
	25%	50%	60%	25%	20%	40%	20%	30%	20%

Big volume, very correct bull that has that extra shot of muscle. You can definitely use him to add some pounds to your calf crop.

LOT 17

MEYER LK TESTAMENT 3028

DOB 01/17/23 • AAA 20835751 • TATTOO 3028

TEHAMA PATRIARCH F028
SIRE: **TEHAMA TESTAMENT**
TEHAMA MARY BLACKBIRD E789

EXAR ENHANCE 8633B
DAM: **MEYER LK MISS BLACKFOOT 1024**
MEYER MISS BLACKFOOT 942

S S NIAGARA Z29
TEHAMA ELITE BLACKBIRD D826
SITZ WISDOM 481T
TEHAMA MARY BLACKBIRD Y677
SYDGEN ENHANCE
EXAR CHLOE 7743
EXAR MONUMENTAL 6056B
MONARCH MISS BLACKFOOT T275

ANGUS GS
Powered by NEAGEN
ACT BW 70
ADJ WW 848
ADJ YW 1318

	CED	BW	WW	YW	DMI	SC	CEM	MILK	MW
%RANK EPD	12	1.5	80	141	1.63	1.96	11	29	63
	10%	60%	10%	10%	85%	3%	25%	30%	55%
	MARB	RE	FAT	SM	SW	SF	SG	SB	SC
%RANK EPD	1.17	0.77	0.024	86	79	88	80	168	304
	15%	35%	65%	5%	10%	50%	10%	25%	10%

Nice, super complete bull that is really complete. Don't discount this bull. His data is SOLID. Check out his weaning, yearling, marbling, and \$C. When you do, you will have him stared to bid.

LOT 14

MEYER NORTHSIDE 3007

DOB 01/07/23 • AAA 20884976 • TATTOO 3007

BAKERS NORTHSIDE 6007
SIRE: **EXAR NORTHSIDE 0630B**
SYDGEN RITA 5730

STEVENSON BIG LEAGUE 70749
DAM: **MEYER MISS BLACKFOOT 1008**
MEYER MISS BLACKFOOT 1605

K C F BENNETT SOUTHSIDE
BAKERS ERICAMERE 3128
SYDGEN ROCK STAR 3461
SYDGEN RITA 3508
JINDRA ACCLAIM
RL 9061 BIRDIE 3102
EXAR DENVER 2002B
MONARCH MISS BLACKFOOT T27

ANGUS GS
Powered by NEAGEN
ACT BW 68
ADJ WW 802
ADJ YW 1199

	CED	BW	WW	YW	DMI	SC	CEM	MILK	MW
%RANK EPD	7	2.4	97	169	2	0.96	12	32	145
	45%	75%	1%	1%	95%	45%	20%	15%	1%
	MARB	RE	FAT	SM	SW	SF	SG	SB	SC
%RANK EPD	0.8	0.72	0.029	46	84	144	60	204	311
	35%	40%	75%	90%	2%	1%	35%	4%	10%

We purchased the EXAR Northside bull to add a shot more grow and length. He has accomplished that and added to his cales genomic profile. This is a Missouri type bull. You will like him like we do.

LOT 16

MEYER TESTAMENT 3024

DOB 01/13/23 • AAA 20840205 • TATTOO 3024

TEHAMA PATRIARCH F028
SIRE: **TEHAMA TESTAMENT**
TEHAMA MARY BLACKBIRD E789

DEER VALLEY GROWTH FUND
DAM: **MEYER LK RUTH 1013**
PCC RUTH 284D

S S NIAGARA Z29
TEHAMA ELITE BLACKBIRD D826
SITZ WISDOM 481T
TEHAMA MARY BLACKBIRD Y677
BASIN PAYWEIGHT 1682
DEER VALLEY RITA 36113
PCC WITTEN 111A
PCC MISS 317Z

ANGUS GS
Powered by NEAGEN
ACT BW 68
ADJ WW 790
ADJ YW 1214

	CED	BW	WW	YW	DMI	SC	CEM	MILK	MW
%RANK EPD	12	-0.3	82	144	1.62	1.17	9	35	60
	10%	20%	10%	10%	85%	35%	45%	10%	60%
	MARB	RE	FAT	SM	SW	SF	SG	SB	SC
%RANK EPD	1.2	0.6	0.069	94	89	113	76	189	339
	10%	60%	95%	2%	1%	10%	15%	10%	2%

Great patterned bull that is a super correct heifer bull. He is long and thick. We think this bull has a lot of value.

LOT 18

MEYER STOCK FUND 3048

DOB 01/29/23 • AAA 20835678 • TATTOO 3048

DEER VALLEY GROWTH FUND
SIRE: **EXAR STOCK FUND 9097B**
EXAR EMPRESS 0875

EXAR DENVER 2002B
DAM: **MEYER MISS BLACKFOOT 1605**
MONARCH MISS BLACKFOOT T275

BASIN PAYWEIGHT 1682
DEER VALLEY RITA 36113
G A R PROPHET K243
EXAR EMPRESS 2622
EXAR UPSHOT 0562B
EXAR ROYAL LASS 1067
EXAR NEW LOOK 2971
PINE COULEE BLACKFOOT R38

ANGUS GS
Powered by NEAGEN
ACT BW 75
ADJ WW 708
ADJ YW 1174

	CED	BW	WW	YW	DMI	SC	CEM	MILK	MW
%RANK EPD	13	-0.6	64	121	0.81	1.39	14	31	69
	10%	15%	50%	35%	30%	20%	10%	20%	50%
	MARB	RE	FAT	SM	SW	SF	SG	SB	SC
%RANK EPD	0.74	0.76	0.038	63	66	108	57	165	277
	45%	35%	85%	55%	30%	15%	40%	25%	25%

We are big fans of the EXAR Stock Fund cattle simply because they are good kind of cattle. Complete with a nice look and design. When you see this bull, you will understand why.

LOT
19

MEYER STOCK FUND 3062

DOB 01/31/23 • AAA 20835671 • TATTOO 3062



ANGUSGS
Powered by NEGENIX

ACT BW
70
ADJ WW
831
ADJ YW
1265

DEER VALLEY GROWTH FUND
SIRE: **EXAR STOCK FUND 9097B**
EXAR EMPRESS 0875

EXAR STUD 6906B

DAM: **MEYER EMPRESS 934**
MEYER EMPRESS 1742

BASIN PAYWEIGHT 1682
DEER VALLEY RITA 36113
G A R PROPHET K243
EXAR EMPRESS 2622
EXAR STUD 4658B
G A R SUNRISE 1482
EXAR STUD 4658B
MEYER EMPRESS 1545

	CED	BW	WW	YW	DMI	SC	CEM	MILK	MW
%RANK EPD	5	1.1	75	136	1.09	0.55	9	25	92
	60%	50%	20%	15%	50%	75%	45%	60%	20%
	MARB	RE	FAT	SM	SW	SF	SG	SB	SC
%RANK EPD	0.79	0.49	0.053	50	67	102	55	157	254
	40%	75%	95%	85%	30%	25%	45%	35%	45%

Super gentle bull that is super balanced. He is rugged in his design and always gives you a good look. He never has a bad day.



EXAR STOCK FUND 9097B
SIRE OF LOTS 18 & 19

LOT
20

MEYER ICONIC 3064

DOB 01/31/23 • AAA 20835656 • TATTOO 3064



ANGUSGS
Powered by NEGENIX

ACT BW
68
ADJ WW
843
ADJ YW
1288

MUSGRAVE 316 STUNNER
SIRE: **DB ICONIC G95**
DB MS DISCOVERY D13

EXAR MONUMENTAL 6056B

DAM: **MEYER EMPRESS 052**
MEYER EMPRESS 1702

LD CAPITALIST 316
MCATL BLACKBIRD 831-1378
V A R DISCOVERY 2240
DB MS FINAL TOOL 4120
3F EPIC 4631
FWY 7008 OF C085 4029
EXAR POWERSOURCE 4723B
MEYER EMPRESS

	CED	BW	WW	YW	DMI	SC	CEM	MILK	MW
%RANK EPD	12	-0.4	60	104	0.9	1.15	14	31	55
	10%	20%	60%	65%	35%	35%	10%	20%	65%
	MARB	RE	FAT	SM	SW	SF	SG	SB	SC
%RANK EPD	1.78	0.55	0.045	53	66	77	107	184	292
	1%	65%	90%	80%	30%	75%	1%	15%	20%

Long, correct, and big hipped bull that charts the highest marbling in the sale! We are big into his kind for the purebred or commercial cattleman.



LOT 20

LOT
21

MEYER DEPOSIT 3105

DOB 02/12/23 • AAA 20832686 • TATTOO 3105



ANGUSGS
Powered by NEGENIX

ACT BW
70
ADJ WW

ADJ YW
1158

BASIN ADVANCE 3134
SIRE: **BASIN DEPOSIT 6249**
BASIN LUCY 4288

V A R GENERATION 2100

DAM: **BASIN CHLOE C042**
HOPEWELL CHLOE A021

G A R PROGRESS
BASIN O LASS 1663
EXAR DENVER 2002B
BASIN LUCY 1037
CONNELLY CONSENSUS 7229
SANDPOINT BLACKBIRD 8809
B P F SPECIAL FOCUS 504
BASIN CHLOE Y106

	CED	BW	WW	YW	DMI	SC	CEM	MILK	MW
%RANK EPD	11	0.2	77	131	1.58	1.92	15	30	90
	15%	30%	15%	20%	80%	4%	3%	25%	25%
	MARB	RE	FAT	SM	SW	SF	SG	SB	SC
%RANK EPD	0.78	0.84	0.001	66	76	107	63	170	286
	40%	25%	35%	45%	10%	15%	30%	20%	20%

Long necked, smooth shouldered bull that I would personally love to keep females out of. He is big ribbed and soft yet lots of growth and performance.



BASIN DEPOSIT 6249
SIRE OF LOTS 21 & 27

LOT 22

MEYER GRENADE 3111

DOB 02/12/23 • AAA 20834832 • TATTOO 3111



ANGUS GS
Powered by NEOGEN

ACT BW
75
ADJ WW
841
ADJ YW
1147

CASINO BOMBER N33
SIRE: EXAR GRENADE 9152B
EXAR MERLE 7441

KM BROKEN BOW 002
DAM: SITZ BARBARAMERE NELL 160E
SITZ BARBARAMERE NELL 289B

KM BROKEN BOW 002
CASINO ANNIE K48
SITZ TOP GAME 561X
EXAR MERLE 2550
SUMMITCREST COMPLETE 1P55
SUMMITCREST PRINCESS OP12
SITZ WISDOM 481T
SITZ BARBARAMERE NELL 73T

	CED	BW	WW	YW	DMI	SC	CEM	MILK	MW
%RANK EPD	9	1.3	81	141	1.49	1.21	11	38	107
	30%	55%	10%	10%	75%	30%	25%	3%	10%
	MARB	RE	FAT	\$M	\$W	\$F	\$G	\$B	\$C
%RANK EPD	0.67	0.85	-0.004	68	81	103	58	161	277
	50%	25%	30%	40%	4%	20%	35%	30%	25%

We love this Grenade bull. His mother came from Sitz ranches and is an upcoming donor for us. She recently had two bulls that sold in the Express Ranches Bull Sale that averaged \$20,000 each. Good cattle here with a load of future. Star him as he is a nice one.

LOT 23

MEYER SAFE DEPOSIT 3123

DOB 02/05/23 • AAA 20832683 • TATTOO 3123



ANGUS GS
Powered by NEOGEN

ACT BW
70
ADJ WW

ADJ YW
1154

BASIN DEPOSIT 6249
SIRE: BASIN SAFE DEPOSIT 9324
BASIN JOY 2006

EZAR GOLD RUSH 6001
DAM: BASIN PRIDE G018
BASIN PRIDE E266

BASIN ADVANCE 3134
BASIN LUCY 4288
SUMMITCREST COMPLETE 1P55
BASIN JOY 566T
V A R DISCOVERY 2240
V A R BLACKCAP 1059
EXAR VISION 1802B
HOPEWELL PRIDE A101

	CED	BW	WW	YW	DMI	SC	CEM	MILK	MW
%RANK EPD	9	-0.2	72	128	1.38	1.44	8	27	79
	30%	20%	25%	25%	70%	20%	55%	45%	35%
	MARB	RE	FAT	\$M	\$W	\$F	\$G	\$B	\$C
%RANK EPD	1.08	0.64	-0.004	62	70	86	76	162	272
	15%	55%	30%	55%	20%	55%	15%	30%	30%

This is a bull that is a game changer for many commercial herds. He is so good looking and complete. He is good footed and has a ton of center body.

LOT 24

MEYER NORTHSIDE 3146

DOB 03/01/23 • AAA 20832097 • TATTOO 3146



ANGUS GS
Powered by NEOGEN

ACT BW
78
ADJ WW
837
ADJ YW
1291

BAKERS NORTHSIDE 6007
SIRE: EXAR NORTHSIDE 0630B
SYDGEN RITA 5730

CASINO BOMBER N33
DAM: MEYER ROSEMARY FAITH 036
MEYER ROSEMARY FAITH 1622

K C F BENNETT SOUTHSIDE
BAKERS ERICAMERE 3128
SYDGEN ROCK STAR 3461
SYDGEN RITA 3508
KM BROKEN BOW 002
CASINO ANNIE K48
PVF INSIGHT 0129
MEYER ROSEMARY FAITH 1416

	CED	BW	WW	YW	DMI	SC	CEM	MILK	MW
%RANK EPD	8	2.6	95	157	1.45	0.62	15	28	102
	35%	80%	1%	3%	75%	70%	3%	40%	15%
	MARB	RE	FAT	\$M	\$W	\$F	\$G	\$B	\$C
%RANK EPD	0.9	1.07	-0.009	70	86	130	73	204	335
	30%	10%	25%	35%	2%	2%	15%	4%	3%

Long necked bull that has the growth and length that the commercial cattleman love. But he also has muscle. Good bull with a super data package.

LOT 25

MEYER EMPIRE 3152

DOB 03/01/23 • AAA 20837977 • TATTOO 3152

ANGUS GS
Powered by NEOGEN

ACT BW
70
ADJ WW

ADJ YW
1238

HA COWBOY UP 5405
SIRE: BASIN EMPIRE 7167
BASIN LUCY 1037

EZAR GOLD RUSH 6001
DAM: BASIN UPTOWN GIRL G014
BASIN UPTOWN GIRL E260

HA OUTSIDE 3008
HA BLACKCAP LADY 1602
GARDENS WAVE
BASIN LUCY 262S
V A R DISCOVERY 2240
V A R BLACKCAP 1059
EXAR VISION 1802B
HOPEWELL UPTOWN GIRL A042

	CED	BW	WW	YW	DMI	SC	CEM	MILK	MW
%RANK EPD	4	2.2	71	128	1.23	1.31	10	25	92
	70%	75%	30%	25%	60%	25%	35%	60%	20%
	MARB	RE	FAT	\$M	\$W	\$F	\$G	\$B	\$C
%RANK EPD	0.33	0.53	-0.028	56	61	106	38	144	243
	85%	70%	10%	75%	45%	20%	80%	50%	60%

Really complete, good footed bull that will just keep getting better with time.



BASIN SAFE DEPOSIT 9324
SIRE OF LOT 23



BASIN EMPIRE 7167
SIRE OF LOT 25

LOT
26

MEYER TESTAMENT 3215

DOB 01/28/23 • AAA 20886033 • TATTOO 3215

TEHAMA PATRIARCH F028
SIRE: **TEHAMA TESTAMENT**
TEHAMA MARY BLACKBIRD E789

STEVENSON BIG LEAGUE 70749
DAM: **MEYER PRIMROSE 1076**
MEYER PRIMROSE 1740

S S NIAGARA Z29
TEHAMA ELITE BLACKBIRD D826
SITZ WISDOM 481T
TEHAMA MARY BLACKBIRD Y677
JINDRA ACCLAIM
RL 9061 BIRDIE 3102
EXAR STUD 4658B
MEYER PRIMROSE 1501

ANGUSGS
Powered by NEIGGS

ACT BW	65
ADJ WW	***
ADJ YW	

	CED	BW	WW	YW	DMI	SC	CEM	MILK	MW
%RANK EPD	8	1.3	79	141	194	1.36	13	27	87
	20%	20%	15%	15%	70%	25%	10%	45%	25%
	MARB	RE	FAT	\$M	\$W	\$F	\$G	\$B	\$C
%RANK EPD	0.72	0.52	0.071	61	73	114	50	164	274
	45%	70%	95%	60%	15%	10%	55%	25%	30%

Super nice bull here that is loaded with muscle and center rib and volume.

LOT
27

MEYER DEPOSIT 3083

DOB 02/05/23 • AAA 20832689 • TATTOO 3083

BASIN ADVANCE 3134
SIRE: **BASIN DEPOSIT 6249**
BASIN LUCY 4288

WR JOURNEY-1X74
DAM: **BASIN JOY 5243**
BASIN JOY 2143

G A R PROGRESS
BASIN O LASS 1663
EXAR DENVER 2002B
BASIN LUCY 1037
B/R FUTURE DIRECTION 4268
2 BAR 5050 NEW DESIGN 7831
B P F SPECIAL FOCUS 504
BASIN JOY 2565

ANGUSGS
Powered by NEIGGS

ACT BW	70
ADJ WW	***
ADJ YW	1176

	CED	BW	WW	YW	DMI	SC	CEM	MILK	MW
%RANK EPD	10	0.1	72	120	1.14	1.45	8	22	61
	20%	25%	25%	40%	50%	20%	55%	80%	60%
	MARB	RE	FAT	\$M	\$W	\$F	\$G	\$B	\$C
%RANK EPD	0.98	0.39	0.034	79	69	93	65	158	284
	25%	85%	80%	15%	25%	40%	25%	35%	20%

Square hipped bull that is balanced and has some look.

LOT
28

MEYER RESILIENT 3099

DOB 02/08/23 • AAA 20835864 • TATTOO 3099

SITZ STELLAR 726D
SIRE: **SITZ RESILIENT 10208**
SITZ MISS BURGESS 1856

OCC ULTIMATE ANSWER 118
DAM: **BASIN PRIDE 7047**
BASIN PRIDE 0143

MOHNEN SUBSTANTIAL 272
SITZ PRIDE 200B
SITZ TOP GAME 561X
SITZ MISS BURGESS 4381
S A V FINAL ANSWER 0035
OCC MONTANA DREAM 809
BASIN PAYWEIGHT 0065
BASIN PRIDE R169

ANGUSGS
Powered by NEIGGS

ACT BW	78
ADJ WW	838
ADJ YW	1320

	CED	BW	WW	YW	DMI	SC	CEM	MILK	MW
%RANK EPD	5	2.2	79	131	0.82	1.16	8	22	81
	60%	75%	15%	20%	30%	35%	55%	80%	35%
	MARB	RE	FAT	\$M	\$W	\$F	\$G	\$B	\$C
%RANK EPD	0.52	0.51	0.056	76	70	101	41	142	260
	70%	70%	95%	20%	20%	25%	70%	55%	40%

Add some length and extension in your calf crop with this nice Sitz Resilient bull.



EPD AVERAGES
OF THE MEYER CATTLE BULL SALE OFFERING

CED	BW	WW	YW	DMI	SC	CEM	MILK	MW
7.24	1.38	79.33	139.56	1.43	1.15	10.09	28.96	93.29
MARB	RE	FAT	\$M	\$W	\$F	\$G	\$B	\$C
0.92	0.72	0.023	59.56	73.58	107.25	66.70	173.86	285.15

EPD AVERAGES
OF THE ANGUS BREED AS OF SPRING 2024

CED	BW	WW	YW	DMI	SC	CEM	MILK	MW
6	1.2	63	112	1.14	.87	9	27	66
MARB	RE	FAT	\$M	\$W	\$F	\$G	\$B	\$C
.69	.65	.013	63	59	88	53	144	250



LOT 29

LOT 29

MEYER OPTIMUM 2230

DOB 08/10/22 • AAA 20832066 • TATTOO 2230

DEER VALLEY GROWTH FUND
SIRE: DEER VALLEY OPTIMUM 9246
 G A R PROGRESS 830

STEVENSON BIG LEAGUE 70749
DAM: MEYER BLACKCAP 048
 EXAR BLACKCAP 5071

BASIN PAYWEIGHT 1682
 DEER VALLEY RITA 36113
 G A R PROGRESS
 G A R III RITO 3346
 JINDRA ACCLAIM
 RL 9061 BIRDIE 3102
 EXAR EZX 3772B
 EXAR BLACKCAP 3777



ANGUS 6S
 Powered by NEOGEN

ACT BW
 70
 ADJ WW

 ADJ YW
 1198

	CED	BW	WW	YW	DMI	SC	CEM	MILK	MW
%RANK EPD	4	2.3	93	165	2.09	0.91	11	31	138
	70%	75%	2%	1%	95%	50%	25%	20%	2%
	MARB	RE	FAT	SM	SW	SF	SG	SB	SC
%RANK EPD	0.71	0.94	0.051	36	80	148	57	205	302
	45%	15%	95%	95%	5%	1%	40%	4%	15%

Im a real big fan of this bull. Depth of body, muscle both up high and down low. He is exactly what we were after when we bred to Deer Valley Optimum.



LOT 30

LOT 30

MEYER ICONIC 2240

DOB 09/24/22 • AAA 20835750 • TATTOO 22400

MUSGRAVE 316 STUNNER
SIRE: DB ICONIC G95
 DB MS DISCOVERY D13

EXAR DENVER 2002B
DAM: MEYER BLACKCAP 1612
 KCS BLACKCAP 7607

LD CAPITALIST 316
 MCATL BLACKBIRD 831-1378
 V A R DISCOVERY 2240
 DB MS FINAL TOOL 4120
 EXAR UPSHOT 0562B
 EXAR ROYAL LASS 1067
 EXAR 263C
 LEACHMAN BLACKCAP 9005



ANGUS 6S
 Powered by NEOGEN

ACT BW
 74
 ADJ WW
 687
 ADJ YW
 1151

	CED	BW	WW	YW	DMI	SC	CEM	MILK	MW
%RANK EPD	8	1.3	69	125	1.48	1.14	9	25	95
	35%	55%	35%	30%	75%	35%	45%	60%	20%
	MARB	RE	FAT	SM	SW	SF	SG	SB	SC
%RANK EPD	1.21	0.26	0.084	36	61	93	71	164	249
	10%	95%	95%	95%	45%	40%	20%	25%	50%

We really like this Iconic son. Loads of extension and built like a truck but can move. Do your homework here.



LOT 31

LOT 31

MEYER OPTIMUM 2231

DOB 08/18/22 • AAA 20835589 • TATTOO 22311

DEER VALLEY GROWTH FUND
SIRE: DEER VALLEY OPTIMUM 9246
 G A R PROGRESS 830

E&B PLUS ONE
DAM: MEYER EILEENMERE LASS 0160
 MEYER EILEENMERE LASS 1017

BASIN PAYWEIGHT 1682
 DEER VALLEY RITA 36113
 G A R PROGRESS
 G A R III RITO 3346
 CONNEALY CONFIDENCE PLUS
 E&B LADY 1023 PRECISION 936
 F V 20K KING 308M
 MEYER EILEENMERE LASS C2T



ANGUS 6S
 Powered by NEOGEN

ACT BW
 65
 ADJ WW
 781
 ADJ YW
 1216

	CED	BW	WW	YW	DMI	SC	CEM	MILK	MW
%RANK EPD	7	0.8	87	161	2.04	0.73	11	30	113
	45%	40%	4%	2%	95%	60%	25%	25%	10%
	MARB	RE	FAT	SM	SW	SF	SG	SB	SC
%RANK EPD	0.63	0.97	0.047	60	79	126	53	179	292
	55%	15%	90%	65%	10%	3%	45%	15%	20%

Wide, correct, and complete. The kind we want all our calves to look like. Buy with confidence.

LOT 32 MEYER EXCLUSIVE 2228
DOB 10/03/22 • AAA 20832702 • TATTOO 22288

LD CAPITALIST 316
SIRE: MUSGRAVE 316 EXCLUSIVE
MUSGRAVE PRIM LASSIE 163-386

MUSGRAVE SKY HIGH 1535
DAM: MEYER GBBZ PRINCESS 7110
VER PRINCESS 520

CONNEALY CAPITALIST 028
LD DIXIE ERICA 2053
MUSGRAVE FOUNDATION
SCR PRIM LASSIE 80634
MUSGRAVE BIG SKY
FLAG QUEEN W 00649
S A V 8180 TRAVELER 004
B F GREENLEE ROSE 116

ANGUS GS
Powered by NEGENEY

ACT BW	65
ADJ WW	814
ADJ YW	1254

CED	BW	WW	YW	DMI	SC	CEM	MILK	MW
9	0.2	69	111	1.02	1.37	11	25	55
30%	30%	35%	55%	40%	20%	25%	60%	65%
MARB	RE	FAT	SM	SW	SF	SG	SB	SC
0.33	0.8	0.029	68	71	81	37	118	221
85%	30%	75%	40%	20%	65%	80%	85%	80%

Maternal made bull that really brings a lot to the conversation in terms of ways to generate dollars. Females to keep or feeder/feedlot cattle, he can do the job.

LOT 33 MEYER LK EXCLUSIVE 2229
DOB 09/25/22 • AAA 20840195 • TATTOO 22299

LD CAPITALIST 316
SIRE: MUSGRAVE 316 EXCLUSIVE
MUSGRAVE PRIM LASSIE 163-386

3F EPIC 4631
DAM: LK MARTHA 851
MEYER MARTHA 1215

CONNEALY CAPITALIST 028
LD DIXIE ERICA 2053
MUSGRAVE FOUNDATION
SCR PRIM LASSIE 80634
VARILEK PRODUCT 2010 04
ZEBO QUEEN 1072
BC EAGLE EYE 110-7
MEYER MARTHA

ANGUS GS
Powered by NEGENEY

ACT BW	74
ADJ WW	710
ADJ YW	1241

CED	BW	WW	YW	DMI	SC	CEM	MILK	MW
4	1.1	81	139	1.71	1.64	10	21	79
70%	50%	10%	15%	90%	10%	35%	85%	35%
MARB	RE	FAT	SM	SW	SF	SG	SB	SC
0.54	0.62	0.051	74	73	100	44	144	261
65%	55%	95%	25%	15%	25%	65%	50%	40%

Marthas are a mainstay at Meyer Cattle and this bull is why. He is compete and good.

LOT 34 MEYER EXCLUSIVE 2234
DOB 09/22/22 • AAA 20832704 • TATTOO 22344

LD CAPITALIST 316
SIRE: MUSGRAVE 316 EXCLUSIVE
MUSGRAVE PRIM LASSIE 163-386

EXAR STUD 4658B
DAM: MEYER MISS EXT 1744
EXAR MISS EXT 85008

CONNEALY CAPITALIST 028
LD DIXIE ERICA 2053
MUSGRAVE FOUNDATION
SCR PRIM LASSIE 80634
A A R TEN X 7008 S A
BOBO RITA 1559
STEVENSON MONEYMAKER R185
EXAR MISS EXT 4473

ANGUS GS
Powered by NEGENEY

ACT BW	65
ADJ WW	657
ADJ YW	1140

CED	BW	WW	YW	DMI	SC	CEM	MILK	MW
9	0.5	68	125	1.08	0.35	11	25	84
30%	35%	40%	30%	45%	85%	25%	60%	30%
MARB	RE	FAT	SM	SW	SF	SG	SB	SC
1.06	0.06	0.062	53	62	91	62	153	251
20%	95%	95%	80%	45%	45%	30%	40%	50%

This bull has a square, wide long hip with a tremendous center rib. He is not hard to miss as a good one.



LOT 34

LOT 35 MEYER EXCLUSIVE 2239
DOB 08/22/22 • AAA 20832705 • TATTOO 22399

LD CAPITALIST 316
SIRE: MUSGRAVE 316 EXCLUSIVE
MUSGRAVE PRIM LASSIE 163-386

EXAR STUD 4658B
DAM: MEYER BLACKBIRD 1710
MEYER BLACKBIRD 1207

CONNEALY CAPITALIST 028
LD DIXIE ERICA 2053
MUSGRAVE FOUNDATION
SCR PRIM LASSIE 80634
A A R TEN X 7008 S A
BOBO RITA 1559
EXAR 263C
EXAR BLACKBIRD 7099

ANGUS GS
Powered by NEGENEY

ACT BW	75
ADJ WW	573
ADJ YW	1130

CED	BW	WW	YW	DMI	SC	CEM	MILK	MW
4	1.8	67	120	0.65	0.98	12	32	59
70%	65%	40%	40%	20%	45%	20%	15%	60%
MARB	RE	FAT	SM	SW	SF	SG	SB	SC
0.88	0.43	0.016	64	68	103	61	165	278
30%	80%	55%	50%	25%	20%	30%	25%	25%

Complete bull both in the pasture and on paper. Hard to put a hole in this one.



MUSGRAVE 316 EXCLUSIVE
SIRE OF LOTS 32-35 & 39

LOT
36

MEYER INSTRUMENTAL 2236

DOB 11/01/22 • AAA 20832069 • TATTOO 22366



ANGUS 6S
Powered by NEOGEN

ACT BW

75

ADJ WW

877

ADJ YW

1365

EXAR MONUMENTAL 6056B
SIRE: EXAR INSTRUMENTAL 8522B
EXAR BLACKCAP 6389

SUMMITCREST COMPLETE 1P55
DAM: MEYER ROSEMARY 1222
EXAR ROSEMARY 9660

3F EPIC 4631
FWY 7008 OF C085 4029
K C F BENNETT ABSOLUTE
EXAR BLACKCAP 4318
C F RIGHT DESIGN 1802
SUMMITCREST ELBA 1M17
BASIN FRANCHISE P142
ESCO ROSEMARY 394T

	CED	BW	WW	YW	DMI	SC	CEM	MILK	MW
%RANK EPD	-1	3.6	83	135	1.5	0.78	8	39	86
	95%	95%	10%	15%	80%	60%	55%	2%	30%
	MARB	RE	FAT	SM	\$W	\$F	\$G	\$B	SC
%RANK EPD	1	1.27	-0.059	65	82	89	85	174	291
	20%	1%	1%	50%	3%	50%	10%	20%	20%

Extension and growth summarize this bull. Perfect bull to add pounds and performance to the calf crop.



EXAR INSTRUMENTAL 8522B
SIRE OF LOT 36

LOT
37

MEYER ICONIC 2241

DOB 09/22/22 • AAA 20835688 • TATTOO 22411



ANGUS 6S
Powered by NEOGEN

ACT BW

65

ADJ WW

824

ADJ YW

1317

MUSGRAVE 316 STUNNER
SIRE: DB ICONIC G95
DB MS DISCOVERY D13

BASIN PAYCHECK E165
DAM: BASIN BLACKCLASS H248
TMR BLACKCLASS 1A04

LD CAPITALIST 316
MCATL BLACKBIRD 831-1378
V A R DISCOVERY 2240
DB MS FINAL TOOL 4120
BASIN PAYCHECK 5249
HOPEWELL CHLOE A096
CONNELLY CONSENSUS 7229
TMR BLACKCLASS 1X85

	CED	BW	WW	YW	DMI	SC	CEM	MILK	MW
%RANK EPD	6	3	89	147	1.4	2.66	7	28	117
	55%	85%	3%	10%	70%	1%	65%	40%	5%
	MARB	RE	FAT	SM	\$W	\$F	\$G	\$B	SC
%RANK EPD	1	0.81	0.042	50	77	104	71	175	277
	20%	30%	85%	85%	10%	20%	20%	20%	25%

Very nice, stout bull that charts a 1.00 marbling EPD along with high growth numbers at both weaning and yearling.



DB ICONIC G95
SIRE OF LOTS 1, 3, 5, 8, 9, 12, 20 & 37

SHOW RING TO RAIL
OUR CATTLE WORK AND PERFORM

LOT 38

MEYER NORTHSIDE 2242

DOB 08/28/22 • AAA 20832071 • TATTOO 22422



BAKERS NORTHSIDE 6007
SIRE: **EXAR NORTHSIDE 0630B**
SYDGEN RITA 5730

K C F BENNETT SOUTHSIDE
BAKERS ERICAMERE 3128
SYDGEN ROCK STAR 3461
SYDGEN RITA 3508
3F EPIC 4631
FWY 7008 OF C085 4029
EXAR DENVER 2002B
EXAR BLACKETTE LADY 4527

ANGUS GS
Powered by NEOGEN
ACT BW
70
ADJ WW
688
ADJ YW
1080

EXAR MONUMENTAL 6056B
DAM: **MEYER BLACKETTE LADY 0152**
MEYER BLACKETTE LADY 1411

	CED	BW	WW	YW	DMI	SC	CEM	MILK	MW
EPD	11	0.6	80	136	1.58	0.41	15	32	123
	15%	35%	10%	15%	80%	80%	3%	15%	4%
	MARB	RE	FAT	SM	\$W	\$F	\$G	\$B	\$C
EPD	1.14	0.59	0.03	45	76	110	76	186	286
	15%	60%	75%	95%	10%	15%	15%	10%	20%

Long and extended with a high marbling EPD. This bull will generate progeny that will grow and yield on the rail.

LOT 39

MEYER COMMERCIAL 2227

DOB 10/04/22 • AAA 627353383 • TATTOO 22277



LD CAPITALIST 316
SIRE: **MUSGRAVE 316 EXCLUSIVE**
MUSGRAVE PRIM LASSIE 163-386

CONNEALY CAPITALIST 028
LD DIXIE ERICA 2053
MUSGRAVE FOUNDATION
SCR PRIM LASSIE 80634

ANGUS GS
Powered by NEOGEN
ACT BW
65
ADJ WW

ADJ YW

	CED	BW	WW	YW	DMI	SC	CEM	MILK	MW
EPD									
	MARB	RE	FAT	SM	\$W	\$F	\$G	\$B	\$C
EPD									

Commercial bull that is flat good. They have to be good for us to keep them for the sale and this one is that. Wide chested, wide and deep hip. This bull can do a lot for the commercial cattleman.

LOT 40

MEYER COMMERCIAL 2232

DOB 08/22/23 • AAA 627353385 • TATTOO 22322



DEER VALLEY GROWTH FUND
SIRE: **DEER VALLEY OPTIMUM 9246**
G A R PROGRESS 830

BASIN PAYWEIGHT 1682
DEER VALLEY RITA 36113
G A R PROGRESS
G A R III RITO 3346
CONNEALY IN SURE 8524
CHAIR ROCK 5050 G A R 8086
EXAR MONUMENTAL 6056B

ANGUS GS
Powered by NEOGEN
ACT BW
75
ADJ WW

ADJ YW

G A R SURE FIRE
DAM:

	CED	BW	WW	YW	DMI	SC	CEM	MILK	MW
EPD	%	%	%	%	%	%	%	%	%
	%	%	%	%	%	%	%	%	%
	MARB	RE	FAT	\$M	\$W	\$F	\$G	\$B	\$C
EPD	%	%	%	%	%	%	%	%	%
	%	%	%	%	%	%	%	%	%

He is the cowman kind. Nice lined with a good hip and hind leg.

CAN'T
MAKE THE
SALE?
ONLINE VIEWING + BIDDING
Available



FEEDLOT CATTLE RESULTS

TWO LOADS OF CATTLE SOLD THIS LAST SPRING,
ALL Sired BY MEYER CATTLE BULLS:

LOAD ONE—100 HEAD

51 PRIME
49 CHOICE
3.5 YIELD GRADE

LOAD TWO—100 HEAD

74 PRIME
26 CHOICE
3.53 YIELD GRADE

TWO-YEAR-OLD



LOT 41

LOT 41 MEYER GROWTH FUND 2165
 DOB 01/09/22 • AAA 20536981 • TATTOO 2165

BASIN PAYWEIGHT 1682
SIRE: DEER VALLEY GROWTH FUND
 DEER VALLEY RITA 36113

EXAR STUD 6906B
DAM: MEYER PRIMROSE 9112
 MEYER PRIMROSE 1740

BASIN PAYWEIGHT 006S
 21AR O LASS 7017
 PLATTEMERE WEIGH UP K360
 DEER VALLEY RITA 9457

EXAR STUD 4658B
 G A R SUNRISE 1482
 EXAR STUD 4658B
 MEYER PRIMROSE 1501

ANGUS6S
 Powered by NEOGEN

ACT BW

ADJ WW

ADJ YW

	CED	BW	WW	YW	DMI	SC	CEM	MILK	MW
%RANK EPD	11	0.7	91	167	1.73	0.87	15	27	121
	15%	40%	2%	1%	90%	55%	3%	45%	4%
	MARB	RE	FAT	SM	SW	SF	SG	SB	SC
%RANK EPD	0.69	0.65	0.095	62	80	127	48	175	289
	50%	50%	95%	55%	5%	3%	60%	20%	20%

Phenotype, genomics, in a package that you LOVE to admire. He looks the part and his data is something to get excited about. He is the maternal package that you can keep daughters out of and build a herd around. Whoever gets this one, we will be excited to see his calves as bred females. Dream big with him. He covers the bases.



LOT 42

LOT 42 MEYER FIREBALL 2135
 DOB 01/26/22 • AAA 20564952 • TATTOO 2135

G A R SURE FIRE 6404
SIRE: GB FIREBALL 672
 GB ANTICIPATION 432

V A R GENERATION 2100
DAM: BASIN HEIRESS E074
 BASIN HEIRESS C022

G A R SURE FIRE
 G A R COMPLETE N281
 G A R ANTICIPATION
 GB AMBUSH 269

CONNEALY CONSENSUS 7229
 SANDPOINT BLACKBIRD 8809
 BASIN PAYWEIGHT 1682
 BASIN HEIRESS A060

ANGUS6S
 Powered by NEOGEN

ACT BW
 72

ADJ WW

ADJ YW
 1120

	CED	BW	WW	YW	DMI	SC	CEM	MILK	MW
%RANK EPD	11	0.9	69	129	1.19	1.13	13	38	93
	15%	45%	35%	25%	55%	35%	10%	3%	20%
	MARB	RE	FAT	SM	SW	SF	SG	SB	SC
%RANK EPD	1.67	1	0.027	59	71	113	109	222	347
	1%	10%	70%	65%	20%	10%	1%	1%	2%

A GB Fireball son that is a great combination of growth, carcass, maternal traits and built like a truck. His math is impressive. We used him ourselves on heifers this last breeding season. Buy with confidence here.



DEER VALLEY GROWTH FUND
 SIRE OF LOTS 7, 41 & 62



GB FIREBALL 672
 SIRE OF LOT 42

LOT
43

MEYER ICONIC 2186

DOB 01/22/22 · AAA 20514316 · TATTOO 2186



ANGUS 6S
Powered by NEOGEN

ACT BW

71

ADJ WW

ADJ YW

1319

MUSGRAVE 316 STUNNER
SIRE: **DB ICONIC G95**
DB MS DISCOVERY D13

G A R ASHLAND
DAM: **MEYER RITA 8140**
EXAR RITA 7623

LD CAPITALIST 316
MCATL BLACKBIRD 831-1378
V A R DISCOVERY 2240
DB MS FINAL TOOL 4120
G A R EARLY BIRD
CHAIR ROCK AMBUSH 1018
EXAR 263C
EXAR RITA 9214

	CED	BW	WW	YW	DMI	SC	CEM	MILK	MW
%RANK EPD	9	1.6	68	124	1.08	1.51	11	29	75
	30%	60%	40%	30%	45%	15%	25%	30%	40%
	MARB	RE	FAT	\$M	\$W	\$F	\$G	\$B	\$C
%RANK EPD	1.36	0.28	0.033	49	65	93	83	175	276
	5%	95%	80%	90%	35%	40%	10%	20%	30%

This is a standout bull. He is deep, long, and loaded with muscle. Michele likes this one quite a bit.



LOT 43

LOT
44

MEYER REGIMENT 2156

DOB 01/21/22 · AAA 20536846 · TATTOO 2156



ANGUS 6S
Powered by NEOGEN

ACT BW

67

ADJ WW

ADJ YW

1202

WAR CAVALRY B063 Z044
SIRE: **WILKS REGIMENT 9035**
VINTAGE CHLOE 6137

EXAR INSIGHT 4947B
DAM: **MEYER EILEENMERE 1753**
MEYER EILEENMERE D26S

CONNELLY CAVALRY 1149
WAR CC&7 Z044 X029
V A R EMPIRE 3037
V A R CHLOE 2227
PVF INSIGHT 0129
EXAR FOREVER LADY 8185
MEYER TWISTER
MEYER EILEENMERE

	CED	BW	WW	YW	DMI	SC	CEM	MILK	MW
%RANK EPD	2	2.9	86	153	1.34	1.35	7	28	103
	85%	85%	5%	4%	65%	25%	65%	40%	15%
	MARB	RE	FAT	\$M	\$W	\$F	\$G	\$B	\$C
%RANK EPD	0.28	1.26	-0.018	61	74	125	45	169	280
	90%	1%	15%	60%	15%	3%	65%	20%	25%

Stout made, long bodied Wilks Regiment son. Lots of meat and muscle in this bull that will add po+BQ48unds to your calf crop. You will like him like we do.



LOT 44



WILKS REGIMENT 9035
SIRE OF LOTS 44-46

LOOK. POWER. DATA.

CATTLE THAT WILL TAKE YOU

to the
NEXT LEVEL

WWW.MEYERCATTLE.COM

LOT 45 MEYER LK REGIMENT 2197
DOB 01/18/22 • AAA 20538354 • TATTOO 2197

WAR CAVALRY B063 Z044
SIRE: WILKS REGIMENT 9035
VINTAGE CHLOE 6137

WB PVF SF INSIGHT 318
DAM: WB FOREVER MINNIE 712
WB FOREVER MINNIE 214

ANGUS GS
Powered by NEIGASBY

ACT BW
67
ADJ WW

ADJ YW
1023

CED	BW	WW	YW	DMI	SC	CEM	MILK	MW
10	0.7	81	151	1.46	1.34	15	35	129
20%	40%	10%	5%	75%	25%	3%	10%	3%
MARB	RE	FAT	\$M	\$W	\$F	\$G	\$B	\$C
0.39	0.97	0.002	40	75	122	45	167	257
80%	15%	35%	95%	15%	4%	65%	25%	45%

Striking son of Wilks Regiment that is long spined and sound with center body and hip shape to boot. On paper he is big growth but he is also a bull to keep females from.

LOT 46 MEYER LK REGIMENT 2198
DOB 02/25/22 • AAA 20538329 • TATTOO 2198

WAR CAVALRY B063 Z044
SIRE: WILKS REGIMENT 9035
VINTAGE CHLOE 6137

PVF INSIGHT 0129
DAM: LK MARTHA 810
MEYER MARTHA 1215

ANGUS GS
Powered by NEIGASBY

ACT BW
71
ADJ WW
763
ADJ YW
1177

CED	BW	WW	YW	DMI	SC	CEM	MILK	MW
-2	4.3	77	128	0.57	1.59	6	27	80
95%	95%	15%	25%	15%	15%	75%	45%	35%
MARB	RE	FAT	\$M	\$W	\$F	\$G	\$B	\$C
0.69	1.16	-0.053	51	65	126	67	194	303
50%	3%	2%	85%	35%	3%	25%	10%	15%

Good fronted and long bodied bull with a load of meat and muscle.

LOT 47 MEYER STUD 2131
DOB 02/28/22 • AAA 20526497 • TATTOO 2131

EXAR STUD 4658B
SIRE: HOPEWELL STUD E463
HOPEWELL EMILY B319

BASIN ADVANCE 3134
DAM: BASIN PAMELA F220
HOPEWELL PAMELA A001

ANGUS GS
Powered by NEIGASBY

ACT BW
72
ADJ WW
662
ADJ YW
1204

CED	BW	WW	YW	DMI	SC	CEM	MILK	MW
11	1.9	77	129	0.9	1.11	8	19	84
15%	65%	15%	25%	35%	35%	55%	95%	30%
MARB	RE	FAT	\$M	\$W	\$F	\$G	\$B	\$C
1.02	0.74	0.029	63	65	116	72	187	306
20%	40%	75%	55%	35%	10%	20%	10%	10%

Power bull here with calving ease that still reads well. Top 20% of the breed for marbling and \$G and Top 15% of the breed for \$C.

LOT 48 MEYER HOMETOWN 2208
DOB 02/28/22 • AAA 20536926 • TATTOO 2208

G A R ASHLAND
SIRE: G A R HOME TOWN
CHAIR ROCK SURE FIRE 6095

STEVENSON BIG LEAGUE 70749
DAM: R EDGE BLACKCAP 9048
DEER VALLEY BLACKCAP 5897

ANGUS GS
Powered by NEIGASBY

ACT BW
67
ADJ WW
792
ADJ YW
1091

CED	BW	WW	YW	DMI	SC	CEM	MILK	MW
5	2.2	71	126	1.66	1.06	6	38	59
60%	75%	30%	30%	85%	40%	75%	3%	60%
MARB	RE	FAT	\$M	\$W	\$F	\$G	\$B	\$C
1.34	1.04	-0.026	66	76	105	97	201	327
10%	10%	10%	45%	10%	20%	3%	5%	4%

Really nice but green bull that we used on commercial cows. He is long and wide topped with a great look.



G A R HOME TOWN
SIRE OF LOTS 48 & 49



LOT 49
MEYER HOMETOWN 2180
 DOB 02/11/22 • AAA 20536952 • TATTOO 2180



G A R ASHLAND
SIRE: G A R HOME TOWN
 CHAIR ROCK SURE FIRE 6095
 HA COWBOY UP 5405
DAM: MEYER CANDOLIER 830
 EXAR CANDOLIER T244

G A R EARLY BIRD
 CHAIR ROCK AMBUSH 1018
 G A R SURE FIRE
 CHAIR ROCK PROGRESS 3005
 HA OUTSIDE 3008
 HA BLACKCAP LADY 1602
 RITO 3X38 OF 2536 EXP
 S U A BTB 9117A

ANGUS GS
 Powered by NEIGEN

ACT BW
67
ADJ WW
719
ADJ YW
1223

	CED	BW	WW	YW	DMI	SC	CEM	MILK	MW
%RANK EPD	1	4.7	93	159	1.61	1.8	6	17	130
	90%	95%	2%	2%	85%	10%	75%	95%	2%
	MARB	RE	FAT	SM	SW	SF	SG	SB	SC
%RANK EPD	0.84	0.93	-0.062	42	62	114	73	187	285
	35%	15%	1%	95%	45%	10%	15%	10%	20%

We used this bull so he is a little skinnier than the rest. But do your homework here. Nice bull that has all the pieces with a solid number package.

LOT 50
MEYER ROLEX 2133
 DOB 02/04/22 • AAA 20583551 • TATTOO 2133



BALDRIDGE COLONEL C251
SIRE: EXAR ROLEX 8709B
 EXAR ROYAL LASS 1067
 BASIN PAYWEIGHT 1682
DAM: BASIN HEIRESS E138
 BASIN HEIRESS X080

BALDRIDGE XPAND X743
 BALDRIDGE ISABEL Y69
 EXAR 263C
 BR ROYAL LASS 19-132
 BASIN PAYWEIGHT 006S
 21AR O LASS 7017
 SQ CREDESCENCE 67S
 BASIN HEIRESS 4T61

ANGUS GS
 Powered by NEIGEN

ACT BW
70
ADJ WW

ADJ YW
1245

	CED	BW	WW	YW	DMI	SC	CEM	MILK	MW
%RANK EPD	3	1.9	72	135	1.18	0.27	12	26	86
	75%	65%	25%	15%	55%	85%	20%	55%	30%
	MARB	RE	FAT	SM	SW	SF	SG	SB	SC
%RANK EPD	0.48	0.85	0.035	58	63	122	45	167	275
	70%	25%	80%	70%	40%	4%	65%	25%	30%

Super complete bull that will go straight to work and cover cows. The work is done for you here.

LOT 51
MEYER EMPIRE 2132
 DOB 02/12/22 • AAA 20526498 • TATTOO 2132



BASIN EMPIRE 7167
SIRE: BASIN EMPIRE G354
 BASIN JOY E376
 HOPEWELL BONUS D023
DAM: BASIN LUCY G251
 BASIN LUCY D144

HA COWBOY UP 5405
 BASIN LUCY 1037
 BALDRIDGE BRONC
 BASIN JOY Y238
 BASIN BONUS 4345
 HOPEWELL CHLOE B031
 BASIN ADVANCE 3134
 BASIN LUCY 1019

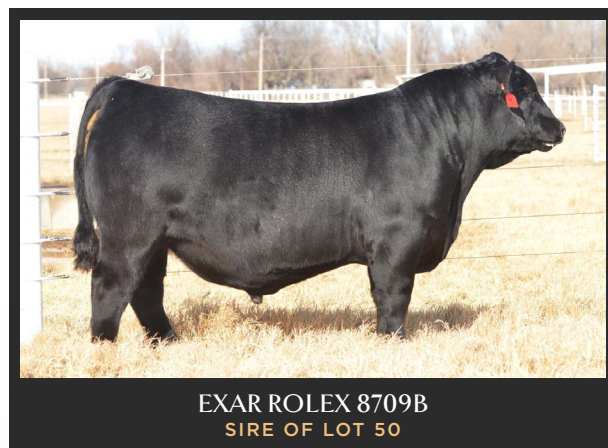
ANGUS GS
 Powered by NEIGEN

ACT BW
72
ADJ WW

ADJ YW
1062

	CED	BW	WW	YW	DMI	SC	CEM	MILK	MW
%RANK EPD	12	-1.1	72	135	1.09	1.08	15	32	96
	10%	10%	25%	15%	50%	40%	3%	15%	20%
	MARB	RE	FAT	SM	SW	SF	SG	SB	SC
%RANK EPD	0.93	0.43	0.052	61	72	89	61	150	256
	25%	80%	95%	60%	20%	50%	30%	40%	45%

Calving ease sire with growth and performance. Top 10% of the breed for CED and BW EPD'S and top 15% for yearling weight.



CHOICE LOT

Take your pick of our three elite replacement females. All three are high quality females that we feel would propel any operation- Purebred or Commerical forward. All three are AI bred and due to calve to Connely Commerce on 9/27/2024

FEMALE S



LOT 52A

LOT 52A

MEYER HEIRESS 2051

DOB 01/30/22 • AAA 20526458 • TATTOO 2051

BALDRIDGE COLONEL C251
SIRE: EXAR ROLEX 8709B
 EXAR ROYAL LASS 1067

BASIN PAYWEIGHT 1682
DAM: BASIN HEIRESS C022
 BASIN HEIRESS A060

BALDRIDGE XPAND X743
 BALDRIDGE ISABEL Y69
 EXAR 263C
 BR ROYAL LASS 19-132
 BASIN PAYWEIGHT 006S
 21AR O LASS 7017
 RITO 9M25 OF RITA 5F56 PRED
 BASIN HEIRESS X080

ANGUSGS
 Powered by NEOGEN

ACT BW

ADJ WW

ADJ YW

	CED	BW	WW	YW	DMI	SC	CEM	MILK	MW
%RANK EPD	11	1.1	61	111	0.75	1.54	13	37	40
	15%	45%	55%	50%	25%	15%	10%	3%	80%
	MARB	RE	FAT	SM	SW	SF	SG	SB	SC
%RANK EPD	0.73	0.4	0.048	90	70	96	51	147	281
	50%	85%	90%	2%	20%	35%	50%	50%	25%



LOT 52B

LOT 52B

MEYER BLACKBIRD 2097

DOB 01/09/22 • AAA 20536533 • TATTOO 2097

BASIN PAYWEIGHT 1682
SIRE: DEER VALLEY GROWTH FUND
 DEER VALLEY RITA 36113

C&C INTUITION 7104
DAM: MEYER BLACKBIRD 035
 MEYER BLACKBIRD 1620

BASIN PAYWEIGHT 006S
 21AR O LASS 7017
 PLATTEMERE WEIGH UP K360
 DEER VALLEY RITA 9457
 PVF INSIGHT 0129
 C&C WINNIE 2048
 74-51 SUDDEN LOOK 1023
 MEYER BLACKBIRD 1439

ANGUSGS
 Powered by NEOGEN

ACT BW

ADJ WW

ADJ YW

	CED	BW	WW	YW	DMI	SC	CEM	MILK	MW
%RANK EPD	7	1.5	88	151	1.23	1.37	8	29	109
	45%	55%	3%	4%	60%	20%	55%	30%	10%
	MARB	RE	FAT	SM	SW	SF	SG	SB	SC
%RANK EPD	0.82	0.6	0.042	60	82	120	59	179	292
	40%	65%	90%	60%	3%	5%	35%	15%	20%



LOT 52C

LOT 52C

MEYER KIMBERLY 2111

DOB 01/15/22 • AAA 20536866 • TATTOO 2111

G A R ASHLAND
SIRE: G A R HOME TOWN
 CHAIR ROCK SURE FIRE 6095

BASIN EMPIRE 7167
DAM: BASIN KIMBERLY H060
 BASIN KIMBERLY F275

G A R EARLY BIRD
 CHAIR ROCK AMBUSH 1018
 G A R SURE FIRE
 CHAIR ROCK PROGRESS 3005
 HA COWBOY UP 5405
 BASIN LUCY 1037
 HOPEWELL RAINMAKER A350
 BASIN KIMBERLY A110

ANGUSGS
 Powered by NEOGEN

ACT BW

ADJ WW

ADJ YW

	CED	BW	WW	YW	DMI	SC	CEM	MILK	MW
%RANK EPD	12	-0.2	60	115	1.3	0.87	13	27	48
	10%	20%	60%	45%	65%	50%	10%	45%	75%
	MARB	RE	FAT	SM	SW	SF	SG	SB	SC
%RANK EPD	1.37	0.53	0.021	73	61	90	87	177	303
	10%	75%	65%	25%	40%	45%	10%	20%	15%



STEVENSON BIG LEAGUE 70749
SIRE OF LOT 53



TEX PLAYBOOK 5437
SIRE OF LOT 54 & 57

LOT 53 MEYER EILEENMERE LASS 1083
DOB 01/21/21 • AAA 20246991 • TATTOO 1083

JINDRA ACCLAIM
SIRE: **STEVENSON BIG LEAGUE 70749**
RL 9061 BIRDIE 3102

JINDRA 3RD DIMENSION
JINDRA BLACKBIRD LASSY 1111
S A V THUNDERBIRD 9061
RL 0145 IMAGE 102
EXAR UPSHOT 0562B
BASIN LUCY 3829
BASIN MAX 213P
CLIFTON EILEENMERE LASS 53R5

ANGUSGS
Powered by NEOGEN

ACT BW

ADJ WW

ADJ YW

	CED	BW	WW	YW	DMI	SC	CEM	MILK	MW
%BANK EPD	-9	6.2	89	148	1.38	0.71	6	28	98
	95%	95%	1%	2%	85%	60%	70%	40%	10%
	MARB	RE	FAT	\$M	\$W	\$F	\$G	\$B	\$C
%BANK EPD	0.67	0.44	0.034	48	69	127	49	176	276
	35%	65%	80%	85%	15%	1%	40%	10%	15%

Really nice 3 year old cow with a big future. Body, muscle, let looks like a lady. She is due to calve on 2/28 to EXAR West Point 0618



LOT 53

LOT 54 LK BLACKCAP 922
DOB 01/26/19 • AAA 19606983 • TATTOO 922

BASIN PAYWEIGHT 1682
SIRE: **TEX PLAYBOOK 5437**
RITA 1C43 OF 9M26 COMPLETE

CONNEALY CONSENSUS 7229
DAM: **EXAR BLACKCAP 2931**
SANDPOINT BLACKCAP 7756

BASIN PAYWEIGHT 006S
21AR O LASS 7017
SUMMITCREST COMPLETE 1P55
RITA 9M26 OF RITA 5F56 PRED
CONNEALY CONSENSUS
BLUE LILLY OF CONANGA 16
G A R PREDESTINED
RITA 1197 OF 2536 RITO 616

ANGUSGS
Powered by NEOGEN

ACT BW

ADJ WW

ADJ YW

	CED	BW	WW	YW	DMI	SC	CEM	MILK	MW
%BANK EPD	8	-0.1	57	94	1.06	0.43	15	35	16
	30%	20%	55%	65%	70%	75%	3%	10%	90%
	MARB	RE	FAT	\$M	\$W	\$F	\$G	\$B	\$C
%BANK EPD	0.53	0.47	0.05	80	71	73	41	115	229
	50%	60%	95%	10%	10%	80%	55%	75%	55%

Deep bodied with loads of milk without sacrificing herself. These Tex Playbook daughters make great cows. This is a very special opportunity. She has a Connelly Craftsman bull calf at side born on 2/12/2024.



LOT 54



LOT 55

LOT 55
MEYER TROJAN ERICA 818
 DOB 02/23/18 • AAA 19150708 • TATTOO 818

HA OUTSIDE 3008
SIRE: HA COWBOY UP 5405
 HA BLACKCAP LADY 1602

EXAR BRIGHT FUTURE 2087B
DAM: MEYER TROJAN ERICA 1547
 BASIN TROJAN ERICA 2S52

KG SOLUTION 0018
 HA EVER LADY 1575
 SITZ UPWARD 307R
 HA BLACKCAP LADY 5515
 EXAR UPSHOT 0562B
 BASIN LUCY 3829
 THREE TREES PRIME CUT 0145
 BASIN TROJAN ERICA 8M06



Powered by NEOGEN

ACT BW

ADJ WW

ADJ YW

	CED	BW	WW	YW	DMI	SC	CEM	MILK	MW
%RANK EPD	4	2.7	65	124	1.23	1.25	9	26	88
	65%	80%	30%	20%	80%	20%	45%	55%	15%
	MARB	RE	FAT	SM	SW	SF	SG	SB	SC
%RANK EPD	0.48	0.35	-0.052	42	53	78	45	124	203
	55%	80%	1%	95%	60%	70%	50%	65%	80%

The Trojan Erica cow families are a mainstay at Meyer Cattle and this female is pretty special. This cow can do a lot for your herd just as she has for us. She is due to calve 5/17/2024 to EXAR Northside 0630B

LOT 56
MEYER PRIMROSE 819
 DOB 02/27/18 • AAA 19150709 • TATTOO 819

HA OUTSIDE 3008
SIRE: HA COWBOY UP 5405
 HA BLACKCAP LADY 1602

GARDENS PRIME STAR
DAM: EXAR PRIMROSE 4029
 EXAR PRIMROSE 4615

KG SOLUTION 0018
 HA EVER LADY 1575
 SITZ UPWARD 307R
 HA BLACKCAP LADY 5515
 N BAR PRIME TIME D806
 GREEN GARDEN JILT C242 S1
 RITO 112 OF 2536 RITO 616
 SUMMITCREST PRIMROSE 2J02



Powered by NEOGEN

ACT BW

ADJ WW

ADJ YW

	CED	BW	WW	YW	DMI	SC	CEM	MILK	MW
%RANK EPD	6	2.8	66	127	1.25	1.59	2	20	83
	45%	80%	30%	15%	80%	10%	95%	90%	20%
	MARB	RE	FAT	SM	SW	SF	SG	SB	SC
%RANK EPD	0.63	0.18	-0.011	42	50	80	48	128	208
	40%	95%	20%	95%	70%	65%	40%	55%	75%

A Primrose cow that stems from Express Ranches. There is no doubt Jarold Callahan was very influential in making the breed great. We were lucky to have Jarold as a mentor for our family. The cattle from Express Ranches has always been pivotal in our success. This female is a testament to that. She is due to calve on 4/3/2024 to EXAR Northside 0630B



LOT 56



LOT 57

LOT 57

MEYER CLOUDY GIRL 916

DOB 02/05/19 • AAA 19601472 • TATTOO 916

BASIN PAYWEIGHT 1682
SIRE: **TEX PLAYBOOK 5437**
RITA 1C43 OF 9M26 COMPLETE

BC 7022 RAVEN 7965
DAM: **EXAR CLOUDY GIRL 9720**
MONARCH CLOUDY GIRL N012

BASIN PAYWEIGHT 006S
21AR O LASS 7017
SUMMITCREST COMPLETE 1P55
RITA 9M26 OF RITA 5F56 PRED
B C MARATHON 7022
O C C BLACKBIRD 796F
BR MIDLAND
H A CLOUDY GIRL 0391

ANGUS6S
Powered by NEOGEN

ACT BW

ADJ WW

ADJ YW

	CED	BW	WW	YW	DMI	SC	CEM	MILK	MW
%RANK EPD	11	-0.5	45	84	0.77	0.35	16	22	10
	15%	15%	85%	80%	45%	80%	1%	80%	95%
	MARB	RE	FAT	SM	SW	SF	SG	SB	SC
%RANK EPD	0.51	0.45	0.002	78	47	71	44	115	227
	55%	65%	35%	10%	75%	85%	50%	75%	55%

This Playbook daughter is a female you love to have in the herd. She has a great udder and teat size. She calved on 2/20 to EXAR Northside 0630B with a heifer calf.

LOT 58

MEYER RITA 820

DOB 02/23/18 • AAA 19150710 • TATTOO 820

HA OUTSIDE 3008
SIRE: **HA COWBOY UP 5405**
HA BLACKCAP LADY 1602

BASIN SPREAD 304T
DAM: **EXAR RITA 9032**
R T R RITA 5116

KG SOLUTION 0018
HA EVER LADY 1575
SITZ UPWARD 307R
HA BLACKCAP LADY 5515
BASIN EXPEDITION 768J
BASIN LUCY 3829
BR MIDLAND
PAF 1206 NEW DESIGN E019

ANGUS6S
Powered by NEOGEN

ACT BW

ADJ WW

ADJ YW

	CED	BW	WW	YW	DMI	SC	CEM	MILK	MW
%RANK EPD	4	2	62	118	1.33	1.14	5	20	74
	65%	65%	40%	25%	85%	30%	80%	90%	25%
	MARB	RE	FAT	SM	SW	SF	SG	SB	SC
%RANK EPD	0.65	0.47	-0.016	41	49	88	53	141	224
	35%	60%	15%	95%	70%	45%	30%	40%	60%

Moderate and deep bodied EXAR Rita 9032 daughter. 9032 wrote history here, she produced females that won the Missouri Angus Futurity and had bulls that topped our sales. She can write history for you also. She is due to calve on 3/4/2024 to EXAR Northside 0630B



HA COWBOY UP 5405
SIRE OF LOTS 55, 56 & 58



TEX PLAYBOOK 5437
SIRE OF LOT 54 & 57

LOT
59

LK RUBY 989

DOB 04/15/19 • AAA 19603355 • TATTOO 989

3F EPIC 4631

SIRE: **EXAR ECLIPSED 7413B**

EXAR FOREVER LADY 4238

EXAR STONEY 0262B

DAM: **EXAR RUBY 2232**

EXAR RUBY 0317

VARILEK PRODUCT 2010 04

ZEBO QUEEN 1072

EXAR DENVER 2002B

EXAR FOREVER LADY 1437

EXAR TITELIST T011

EXG BLACKBIRD P777 R3

NORTHERN IMPROVEMENT 4480

LIMESTONE RUBY T297

ANGUSGS
Powered by NEOGEN

ACT BW

ADJ WW

ADJ YW

	CED	BW	WW	YW	DMI	SC	CEM	MILK	MW
%RANK EPD	4	2	57	97	0.95	0.81	9	20	41
	65%	65%	55%	60%	60%	50%	45%	90%	65%
	MARB	RE	FAT	\$M	\$W	\$F	\$G	\$B	\$C
%RANK EPD	0.81	0.28	0.127	63	51	86	47	133	236
	20%	85%	95%	45%	65%	50%	45%	50%	45%

Deep bodied, long sided female that has been a great producer for Lexi. She calved on 2/22/2024 to Tehama Testament with a bull calf.

LOT
60

MEYER RITA 046

DOB 03/20/20 • AAA 19965861 • TATTOO 046

A A R TEN X 7008 S A

SIRE: **DEER VALLEY ALL IN**

DEER VALLEY RITA 0274

BASIN SPREAD 304T

DAM: **EXAR RITA 9032**

R T R RITA 5116

MYTTY IN FOCUS

A A R LADY KELTON 5551

SITZ UPWARD 307R

G A R OBJECTIVE 2345

BASIN EXPEDITION 768J

BASIN LUCY 3829

BR MIDLAND

PAF 1206 NEW DESIGN E019

ANGUSGS
Powered by NEOGEN

ACT BW

ADJ WW

ADJ YW

	CED	BW	WW	YW	DMI	SC	CEM	MILK	MW
%RANK EPD	9	-1.4	45	76	0.16	1	13	27	20
	25%	10%	85%	90%	10%	35%	10%	45%	90%
	MARB	RE	FAT	\$M	\$W	\$F	\$G	\$B	\$C
%RANK EPD	0.47	0.62	-0.034	61	53	68	47	115	210
	60%	35%	4%	50%	60%	85%	45%	75%	75%

Moderate female that is super attractive. We like these Rita females because they do not miss. She is due 3/9/2024 to EXAR Northside 0630B.

LOT
61

MEYER ROSEMARY FAITH 036

DOB 03/15/20 • AAA 19964648 • TATTOO 036

KM BROKEN BOW 002

SIRE: **CASINO BOMBER N33**

CASINO ANNIE K48

PVF INSIGHT 0129

DAM: **MEYER ROSEMARY FAITH 1622**

MEYER ROSEMARY FAITH 1416

SUMMITCREST COMPLETE 1P55

SUMMITCREST PRINCESS OP12

DPL UPWARD L70

CASINO ANNIE G64

S A V BRILLIANCE 8077

PVF MISSIE 790

EXAR DENVER 2002B

EXAR ROSEMARY 9660

ANGUSGS
Powered by NEOGEN

ACT BW

ADJ WW

ADJ YW

	CED	BW	WW	YW	DMI	SC	CEM	MILK	MW
%RANK EPD	3	3	76	129	1.31	0.79	9	23	92
	70%	85%	10%	15%	80%	50%	45%	75%	10%
	MARB	RE	FAT	\$M	\$W	\$F	\$G	\$B	\$C
%RANK EPD	0.48	0.89	-0.003	51	63	113	49	162	261
	55%	10%	30%	80%	30%	10%	40%	15%	25%

Really attractive and nicely name four year old. She is the kind to build around. She is due to calve on 3/9/2024 to EXAR Northside 0630B.

LOT
62

MEYER BLACKBIRD 1022

DOB 01/10/21 • AAA 20247824 • TATTOO 1022

BASIN PAYWEIGHT 1682

SIRE: **DEER VALLEY GROWTH FUND**

DEER VALLEY RITA 36113

EXAR MONUMENTAL 6056B

DAM: **MEYER BLACKBIRD 929**

MEYER BLACKBIRD 1710

BASIN PAYWEIGHT 006S

21AR O LASS 7017

PLATTEMERE WEIGH UP K360

DEER VALLEY RITA 9457

3F EPIC 4631

FWY 7008 OF C085 4029

EXAR STUD 4658B

MEYER BLACKBIRD 1207



ANGUSGS
Powered by NEOGEN

ACT BW

ADJ WW

ADJ YW

	CED	BW	WW	YW	DMI	SC	CEM	MILK	MW
%RANK EPD	5	1.2	80	144	1.44	1.16	9	27	93
	55%	45%	5%	3%	90%	25%	45%	45%	10%
	MARB	RE	FAT	\$M	\$W	\$F	\$G	\$B	\$C
%RANK EPD	0.74	0.8	0.016	61	68	110	59	169	280
	30%	15%	55%	50%	15%	10%	25%	10%	15%

Growth Fund daughter that is sure to generate dollars. Every Growth Fund bull is valuable in Missouri this cow can produce and earn you a nice revenue as well. She is due to calve on 3/9/2024 to EXAR Northside 0630B.



CASINO BOMBER N33
SIRE OF LOT 61



DEER VALLEY GROWTH FUND
SIRE OF LOTS 7, 41 & 62

LOT 63 MEYER EILEENMERE LASS 1018
DOB 01/20/21 • AAA 20500256 • TATTOO 1018

JINDRA ACCLAIM JINDRA 3RD DIMENSION
SIRE: STEVENSON BIG LEAGUE 70749 JINDRA BLACKBIRD LASSY 1111
 RL 9061 BIRDIE 3102 S A V THUNDERBIRD 9061
 EXAR BRIGHT FUTURE 2087B EXAR UPSHOT 0562B
DAM: MEYER EILEENMERE LASS 1667 BASIN LUCY 3829
 MEYER EILEENMERE LASS 1017 F V 20K KING 308M
 MEYER EILEENMERE LASS C2T



ACT BW

ADJ WW

ADJ YW

CED	BW	WW	YW	DMI	SC	CEM	MILK	MW
-8	5.3	86	152	1.91	0.96	5	30	129
95%	95%	2%	2%	95%	40%	80%	25%	1%
MARB	RE	FAT	\$M	\$W	\$F	\$G	\$B	\$C
0.5	0.48	0.025	24	64	125	42	166	239
55%	60%	70%	95%	25%	2%	55%	15%	45%

Big framed, deep bodied female that sure produces milk. She will be a nice young female to add to the herd to generate dollars. She is due to calve on 3/14/2024 to EXAR Northside 0630B.

LOT 64 WHEELER BLANCHE H064
DOB 04/03/20 • AAA 20039377 • TATTOO H064

S A V RESOURCE 1441 RITO 707 OF IDEAL 3407 7075
SIRE: WAF RESOURCE 6200 S A V BLACKCAP MAY 4136
 SIEBRINGS FOREVER LADY 005 S A V MANDAN 5664
 MCC BRILLIANCE 3962 SIEBRING FOREVER BANDOLIER
DAM: R4 BLANCHE 559 S A V BRILLIANCE 8077
 JACS BLANCHE 1917 SCHROEDER ERICA 962
 BON VIEW NEW DESIGN 878
 ALC BLANCHE W07S



ACT BW

ADJ WW

ADJ YW

CED	BW	WW	YW	DMI	SC	CEM	MILK	MW
3	2.4	55	101	0.74	1.28	8	27	51
70%	75%	60%	55%	45%	20%	55%	45%	55%
MARB	RE	FAT	\$M	\$W	\$F	\$G	\$B	\$C
0.22	0.59	0.032	60	50	96	29	125	222
90%	40%	80%	55%	70%	30%	85%	60%	60%

Good Missouri bred young female from the Wheeler Angus Farms just down the road. She is a nice female that will add value. She calved to EXAR Northside on 2/22/2014 with a bull calf.

LOT 65 MEYER RITA 1003
DOB 03/12/21 • AAA 20342050 • TATTOO 1003

DEER VALLEY GROWTH FUND BASIN PAYWEIGHT 1682
SIRE: EXAR FUNDAMENTAL 9186B DEER VALLEY RITA 36113
 EXAR ROYAL LASS 4639 EXAR UPSHOT 0562B
 EXAR ROYAL LASS 1067 EXAR UPSHOT 0562B
 EXAR DENVER 2002B EXAR ROYAL LASS 1067
DAM: MEYER RITA 1525 BASIN SPREAD 304T
 EXAR RITA 9032 R T R RITA 5116



ACT BW

ADJ WW

ADJ YW

CED	BW	WW	YW	DMI	SC	CEM	MILK	MW
8	2.2	62	109	1.08	0.39	9	34	33
30%	70%	40%	40%	70%	80%	45%	10%	75%
MARB	RE	FAT	\$M	\$W	\$F	\$G	\$B	\$C
0.9	0.44	0.104	73	67	96	55	151	269
15%	65%	95%	20%	20%	30%	30%	25%	20%

Nice young female at always does her job. She calved on 2/22/2024 with a heifer calf to EXAR West Point 0618.

LOT 66 MEYER EMPRESS 1033
DOB 02/15/21 • AAA 20246973 • TATTOO 1033

SYDGEN ENHANCE SYDGEN EXCEED 3223
SIRE: EXAR ENHANCE 8633B SYDGEN RITA 2618
 EXAR CHLOE 7743 A A R TEN X 7008 S A
 BASIN CHLOE OT16
 MEYER DISCOVERY 1720 V A R DISCOVERY 2240
DAM: MEYER EMPRESS 981 EXAR BARBARA 0974
 MEYER EMPRESS 1754 EXAR INSIGHT 4947B
 MEYER EMPRESS 1107 MEYER EMPRESS 1107



ACT BW

ADJ WW

ADJ YW

CED	BW	WW	YW	DMI	SC	CEM	MILK	MW
10	0.4	70	131	1.1	1.39	14	36	80
20%	30%	20%	10%	70%	15%	5%	5%	20%
MARB	RE	FAT	\$M	\$W	\$F	\$G	\$B	\$C
0.82	0.81	-0.018	60	72	100	66	166	275
20%	15%	15%	55%	10%	20%	15%	15%	15%

Another young female that is doing her job well. She has a lifetime ahead of her to make you money. She calved on 2/22/2024 to EXAR West Point 0618.



EXAR WEST POINT 0618
SERVICE SIRE

JOIN US
FRIDAY, APRIL 5, 2024



LOT 67

LOT 67
MEYER MISSIE 054
DOB 01/20/20 • AAA 19964773 • TATTOO 054

HA OUTSIDE 3008
SIRE: HA COYBOY UP 5405
HA BLACKCAP LADY 1602

CONNEALY CONSENSUS 7229
DAM: MEYER MISSIE 1520
BIGRIVER PVF MISSIE 1103

KG SOLUTION 0018
HA EVER LADY 1575
SITZ UPWARD 307R
HA BLACKCAP LADY 5515
CONNEALY CONSENSUS
BLUE LILLY OF CONANGA 16
PVF ALL PAYDAY 729
PVF MISSIE 8018



ACT BW

ADJ WW

ADJ YW

CED	BW	WW	YW	DMI	SC	CEM	MILK	MW
-6	8	94	173	1.34	1.48	1	28	158
95%	95%	1%	1%	85%	10%	95%	40%	1%
MARB	RE	FAT	SM	SW	SF	SG	SB	SC
0.19	0.89	-0.08	12	55	127	40	167	229
90%	10%	1%	95%	55%	1%	60%	15%	55%

Growthy Missie female that sure brings a lot of productivity. This cow family has been good to us. She is due to calve on 4/27/2024 to EXAR Northside 0630B.

LOT 68
MEYER LK MISS BLACKFOOT 032
DOB 03/20/20 • AAA 19966086 • TATTOO 032

KM BROKEN BOW 002
SIRE: CASINO BOMBER N33
CASINO ANNIE K48

CONNEALY CONSENSUS 7229
DAM: EXAR MISS BLACKFOOT 3009
EXAR MISS BLACKFOOT 3300

SUMMITCREST COMPLETE IP55
SUMMITCREST PRINCESS OP12
DPL UPWARD L70
CASINO ANNIE G64
CONNEALY CONSENSUS
BLUE LILLY OF CONANGA 16
SQ CREDENCE 67S
MONARCH MISS BLACKFOOT T27



ACT BW

ADJ WW

ADJ YW

CED	BW	WW	YW	DMI	SC	CEM	MILK	MW
5	3	81	126	1.2	0.6	10	29	67
60%	85%	10%	25%	55%	70%	35%	30%	50%
MARB	RE	FAT	SM	SW	SF	SG	SB	SC
0.43	1.01	-0.024	71	79	110	50	159	277
80%	15%	15%	30%	5%	15%	55%	35%	30%

The Miss Blackfoot cow family stems from Express Ranches and has been influential on the bull side of Meyer Cattle with many high sellers going back to this cow family. We hate to let this one go. She is due to calve to EXAR Enhance 8633B on 4/6/2024.

LOT 69
MEYER MISS PRIDE 028
DOB 03/22/20 • AAA 19884267 • TATTOO 028

EXAR MONUMENTAL 6056B
SIRE: EXAR INSTRUMENTAL 8522B
EXAR BLACKCAP 6389

EXAR INSIGHT 4947B
DAM: MEYER MISS PRIDE 1736
MEYER MISS PRIDE 1430

3F EPIC 4631
FWY 7008 OF C085 4029
K C F BENNETT ABSOLUTE
EXAR BLACKCAP 4318
PVF INSIGHT 0129
EXAR FOREVER LADY 8185
EXAR BRIGHT FUTURE 2087B
EXAR MISS PRIDE 5867



ACT BW

ADJ WW

ADJ YW

CED	BW	WW	YW	DMI	SC	CEM	MILK	MW
7	1.5	60	102	1.15	1.4	4	29	43
40%	55%	45%	50%	75%	15%	85%	35%	65%
MARB	RE	FAT	SM	SW	SF	SG	SB	SC
0.82	0.87	0.03	48	63	74	63	137	226
20%	10%	75%	85%	30%	75%	20%	45%	60%

Feminine fronted, big middled female that has such a gret look to her. She due to calve on 3/22//2024 to EXAR Enhance 8633B.



Jax loves all types of equipment!

Lexi showing at the Cattlemen's Congress.



We are always thankful for Callie Bailey, Lexi's dear friend that spends a lot of time with our family. She helps us with Jax and around the farm and shows when we need an extra hand.

OUR FAMILY

the heart OF MEYER CATTLE

Meyer LK Forever Lady 3106 "Seven" was the Champion Junior Heifer Calf at the Missouri State Fair.



Jax sure enjoyed getting his turn in the show ring with Seven.

Jax started showing this summer and loves it! He showed at PeeWee Shows and Seven at the Missouri State Fair, with the help of his sissy, Lexi.



Lexi took on a new chapter of her show career this year with a Hereford heifer from Express Ranches, EXR Primrose 3504 ET.



Jax gets in on all the work at the Junior National. His sissy does not let him off the hook to make sure everything gets complete.



Meyer LK Forever Lady 3106 "Seven" 2nd Place at the Cattlemen's Congress.



Jax received an award for the Missouri Junior Heifer Calf Champion and was so proud of his heifer, Seven.



LLW Cardinal Lucy 287K "Betty" was Reserve Champion Senior Heifer calf at the Missouri State Fair.



Brock served as the Missouri Angus President this past year.



Brock really is the do it all guy. He makes things happen around the farm and at shows.



The best team ever; Lexi and Jax at the Missouri State Fair.



Lexi was honored to exhibit the Reserve Champion Market Wether at the Missouri State Fair "Butters".



the LOLA LEGACY

EXAR FRONTIER GAL 2057



WILKS FRONTIER GAL 3354
GRAND CHAMPION FEMALE
 2024 HOUSTON LIVESTOCK SHOW



WILKS FRONTIER GAL 3354
CLASS WINNER
 2024 FORT WORTH STOCK SHOW



EXAR FRONTIER GAL 2869 "LAYLA"
CLASS WINNER
 2024 CATTLEMEN'S CONGRESS
 HALF SISTER TO LOLA



LK WILKS FRONTIER GAL 3353
2ND IN CLASS
 2024 CATTLEMEN'S CONGRESS



THANK YOU

FOR YOUR INTEREST
& SAFE TRAVELS

Meyer
CATTLE

Meyer
CATTLE

14353 HIGHWAY 61
BOWLING GREEN, MO 63334



SALE BOOK DESIGNED BY MELISSA GRIMMEL SCHAAKE